

Quality façade systems and finishes.



WARM[®]
WALL

External Wall Insulation Systems

KNAUF MARMORIT GMBH
Recognised quality thanks to over
130 years of research and development.

Over 130 years of experience is the basis of our reputation and is synonymous with the quality and resilience of our products.

The high quality of our systems have been well proven and having our own Climate Chamber ensures that our systems have been rigorously tested prior to examination by third party accreditation authorities.



MARMORIT UK GMBH
Where service really counts.
MARMORIT with you from beginning to end.

MARMORIT UK have built on the exceptional reputation of its mother company to provide the highest quality external wall insulation and render systems for the UK market.

All our personnel are of the highest quality and as a company we aim to provide unequalled service within our industry.

A full range of services are available from us including samples, specifications, training seminars, U Value and condensation risk analysis, site reports, drawings and the knowledge that all our applicators have been trained and monitored by us.



WARM[®] WALL

MARMORIT WARM WALL External Wall Insulation Systems

Fulfil the ever increasing requirement for thermal and sound insulation, whilst providing a weatherproof and decorative finish that requires no future maintenance.

The system is designed for greater thermal performance and with a range of thicknesses up to 400 mm, we can assure that no matter what changes take place to the Building Regulations regarding U Values, that the MARMORIT WARM WALL System will be able to meet these requirements.

MARMORIT WARM WALL is suitable for

Existing

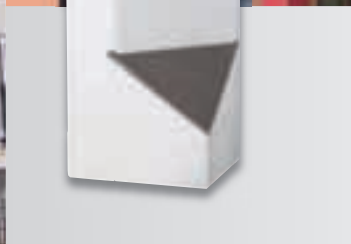
- Brickwork
- Rendered Facades
- Concrete
- Stonework

New Build

- Single Skin Blockwork
- Concrete
- Steel Frame Construction
- Timber Frame Construction

The Benefits Are

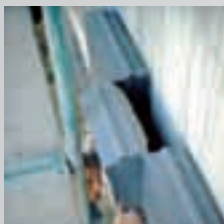
- Thermally efficient
- Breathable
- No loss of internal space
- Quicker construction process
- Reduced or eliminated scaffolding time
- Weatherproof
- Less disruption to occupants
- Healthier living climate
- Extends the building life
- Manufacturers warranty





Systems

**NUT &
FEDER**



Polystyrene Tongue and Groove insulation provides a level surface, eliminates the need for rasping and prevents cold bridging from mortar seepage.

polimell®



polimell Elasticated Polystyrene insulation has a special pre-coating, allowing for faster application and also has a proven sound reduction of up to 7 dB.

**RAIL /
CAVITY RAIL**



The Rail / Cavity Rail Systems are available in both Polystyrene and Mineral Fibre for use with substrates that are too weak for a direct bond, or where a metal / timber frame is used.

**vola.
mit®**



volamit Mineral Fibre insulation has a special pre-coating, allowing for faster application and also has a proven sound reduction of up to 3 dB.

**MINERAL
FIBRE**



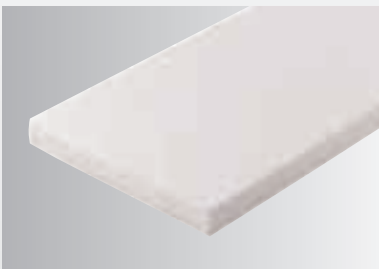
Mineral Fibre Insulation was the first proven External Wall Insulation system and has a high degree of vapour permeability. Eliminates the need for firebreaks.

Quix®
VON MARMORIT

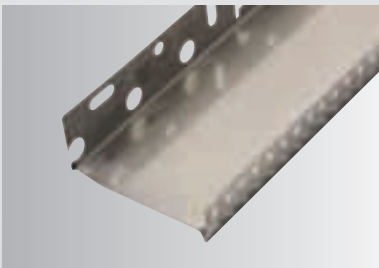


Quix starter system is available in both Polystyrene and Mineral Fibre and provides a quick and efficient method of starting the system.

Sd Board



The Sd Board is designed for use in the plinth areas and below ground level.



Stainless Steel starter tracks to carry the MARMORIT WARM WALL system



Termofix S fixing for Masonry substrates

Pd Board



The Pd Board is designed for use in the plinth areas as well as areas prone to impact or damage.



Aluminium starter tracks, light-weight and can be powder coated to a RAL number if required.

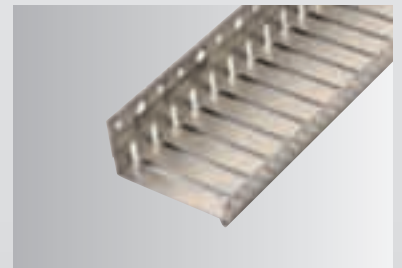


Termofix H fixing for Timber and cement board substrates.

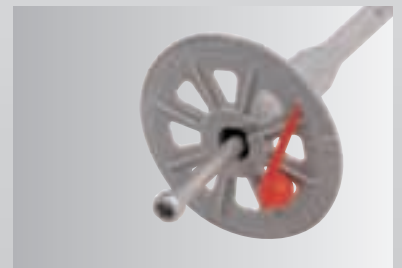
Vandalit



The Sp Board is specifically designed for low level use where the risk of impact or damage is very high.



Aluminium curved track to follow the radius of the building.



Termoz 8U fixing for Hollow block substrates.

Installation



01 Remove any dust, dirt or anything which may interfere with the adhesive bond to the substrate. Fix the MARMORIT starter track using mechanical fixings every 300 mm.



02 Apply SM700 or Lusto bonding mortar to a thickness of 10 mm by hand or machine to the rear of the insulation panel. Ensure that the bonding mortar has a surface coverage of 40%.



03 Starting at the bottom right hand building corner, apply the Insulation panels in a stretcher bond formation, allowing a minimum 200 mm overlap. Panels are then to be tapped back.



04 Around the window and door openings, apply a white UPVC APU Rail to provide a clean and neat frame abutment.



05 Alternatively at the window / door openings as well as junctions with other building elements, apply a Joint Sealing Strip to the frame to render up to.



06 Where window cills are to be fitted, apply a SR Band to the underside of the cill to prevent movement between the cill and the Warm Wall System.



07 A 200 mm mineral fibre fire-break should be applied at the floor level on all polystyrene WARM WALL systems that are above 3 storeys in height. i.e. between the 2nd and 3rd floor and every subsequent floor there after.



08 Thermal Mechanical fixings are to be inserted into the system 4 per m² for masonry substrates and 5 per m² for timber or cement board substrates.



09 Diagonally above and below the corners of all building openings apply a 300 mm x 500 mm fabric reinforcing mesh patch into the wet reinforcing mortar.



10 Apply SM700 or Lustro by hand or by machine to a thickness of 5 mm from the top of the building downwards and level out.



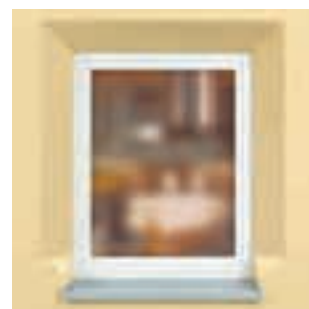
11 Immediately afterwards apply to the entire surface a layer of fabric reinforcing mesh, ensuring that the edges of the mesh overlap by a minimum of 100 mm.



12 Onto the dry reinforcing mortar apply the MARMORIT finish render to the required thickness. Priming of the reinforcing mortar may be required before application.



Building Profiles



Building profiles made from Polystyrene or Mineral Fibre, designed to enhance and contribute to the building design.

LICHTKEIL Round

A rounded profile for use on windows and doors



LICHTKEIL Diagonal

A diagonal profile that allows 30% more light infiltration



LICHTKEIL Curved

A curved profile designed to exaggerate the window opening





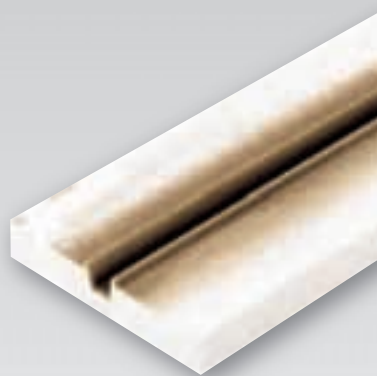
FLIXX®

A specially designed step profile for visual enhancement of the facade.



Bossen Profile

A polystyrene profile which creates an ashlar profile without the need for cutting.



Quix® VON MARMORIT

Polystyrene or Mineral Fibre insulation starter blocks which provide a more decorative underside to the system.



U Value Guideline Chart

Insulation thickness	60 mm	70 mm	80 mm	90 mm	100 mm	120 mm	140 mm	160 mm	180 mm	200 mm	300 mm	400 mm
Metal / Timber frame Studs unfilled	0.46	0.41	0.37	0.34	0.30	0.26	0.23	0.20	0.18	0.16	0.11	0.08
215 mm lightweight Thermal blockwork	0.26	0.25	0.23	0.22	0.20	0.19	0.17	0.15	0.14	0.13	0.10	0.07
140 mm medium dense Concrete blockwork	0.48	0.43	0.38	0.35	0.31	0.27	0.24	0.21	0.19	0.17	0.11	0.09
250 mm unfilled block / Brick cavity construction	0.43	0.39	0.35	0.32	0.29	0.25	0.22	0.20	0.18	0.16	0.11	0.08

All figure are indicative. MARMORIT are happy to provide U Value and condensation risk reports upon request.



MARMORIT and the Environment

MARMORIT are very conscious regarding the environment and the related issues of thermal efficiency. We promote the use of natural mineral insulation and render systems as well as endeavouring where possible to use and to recycle material for our own product range.

The energy expelled in the manufacturing processes for these systems are more than recouped in the thermal benefits they provide and the reduction in the carbon dioxide emissions.

Raw materials are sourced locally to the manufacturing plants which reduces the transportation pollution and MARMORIT also owns its own limestone quarry, the products and by-products of which are used within our own renders.

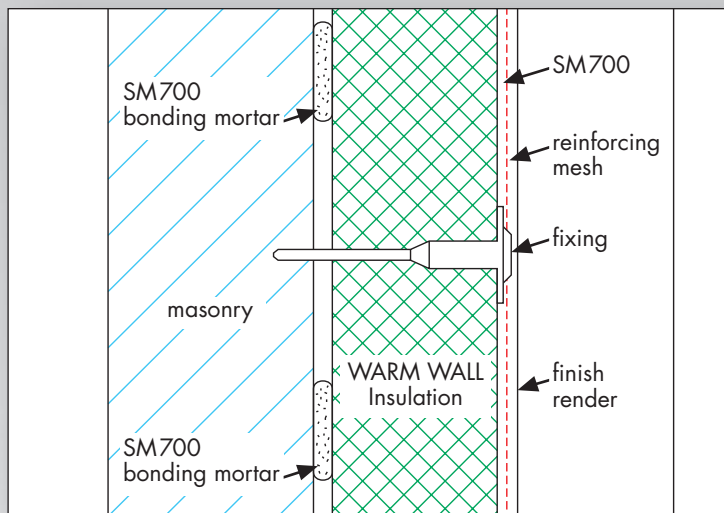
KNAUF MARMORIT GMBH are actively involved in the development and construction of Passive House properties within the UK and Europe.



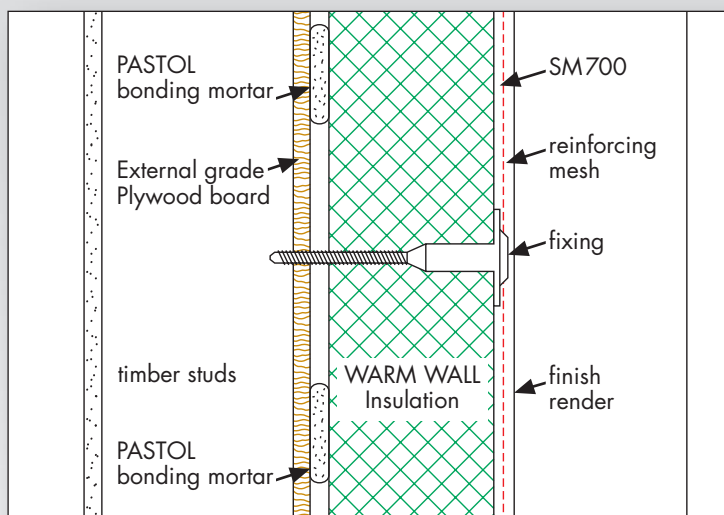
Details

The below details are generic sections through the wall. For specific details, please ask the MARMORIT technical office.

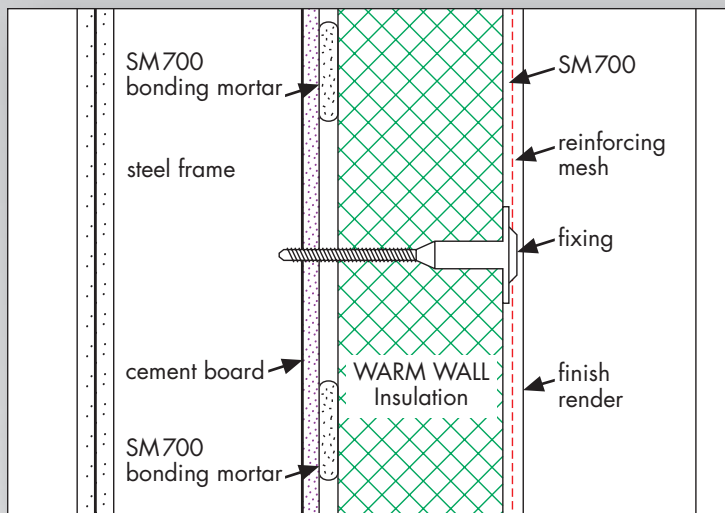
Masonry Construction



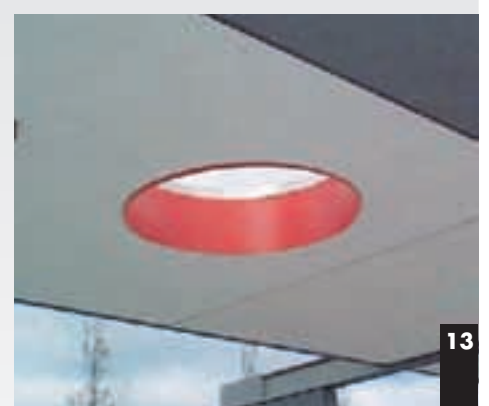
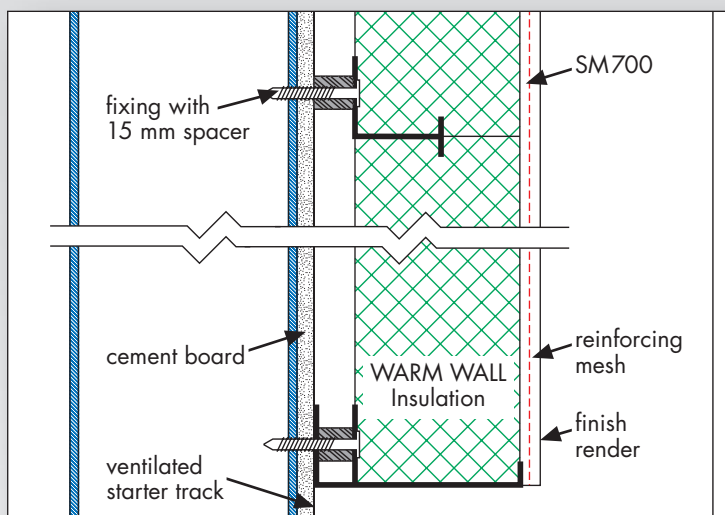
Timber Frame Construction



Metal Frame Construction



Cavity Rail Construction





Render finishes



Mineral and Silicone renders are well known for their vapour diffusion and robustness. With grain sizes from 0.6 mm (pico) to 10 mm (KW220) and over 850 standard colours, MARMORIT provide the inspiration for your design.

NOBLO[®]

conni[®]



SP260®

pico®
der Feine

KW 220®

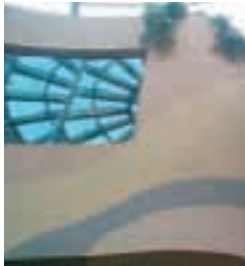
mak3®

RP240®

ROLLS®

KATI®

KATI®



WARM[®]
WALL

Coherent concept, scrupulous detailing, outstanding results:
WARM WALL Systems
by MARMORIT

MARMORIT UK GMBH
1 Portview Road • Avonmouth Bristol BS11 9LS
Freephone: 0800 731 3076
Enquiries: 0117 982 1042
Orders: 0117 982 3870
fax: 0117 982 3025
enquiries@marmorit.co.uk

KNAUF *überall am Bau ...*

Knauf Marmorit GmbH
Mineralische
Fassadensysteme

Knauf AMF GmbH & Co. KG
Deckensysteme

Knauf Bauprodukte GmbH
Profi-Lösungen für Zuhause

Knauf Gips KG
Trockenbau-, Gipsputz-
und Bodensysteme

Knauf Insulation GmbH
Glaswolle-Isolierung, XPS

Knauf Integral KG
Der Glasfaserwerkstoff

Knauf Perlite GmbH
Perlite Dämmstoffe,
Schüttungen, Aquapanel

Knauf PFT GmbH
Maschinenteknik
und Anlagenbau