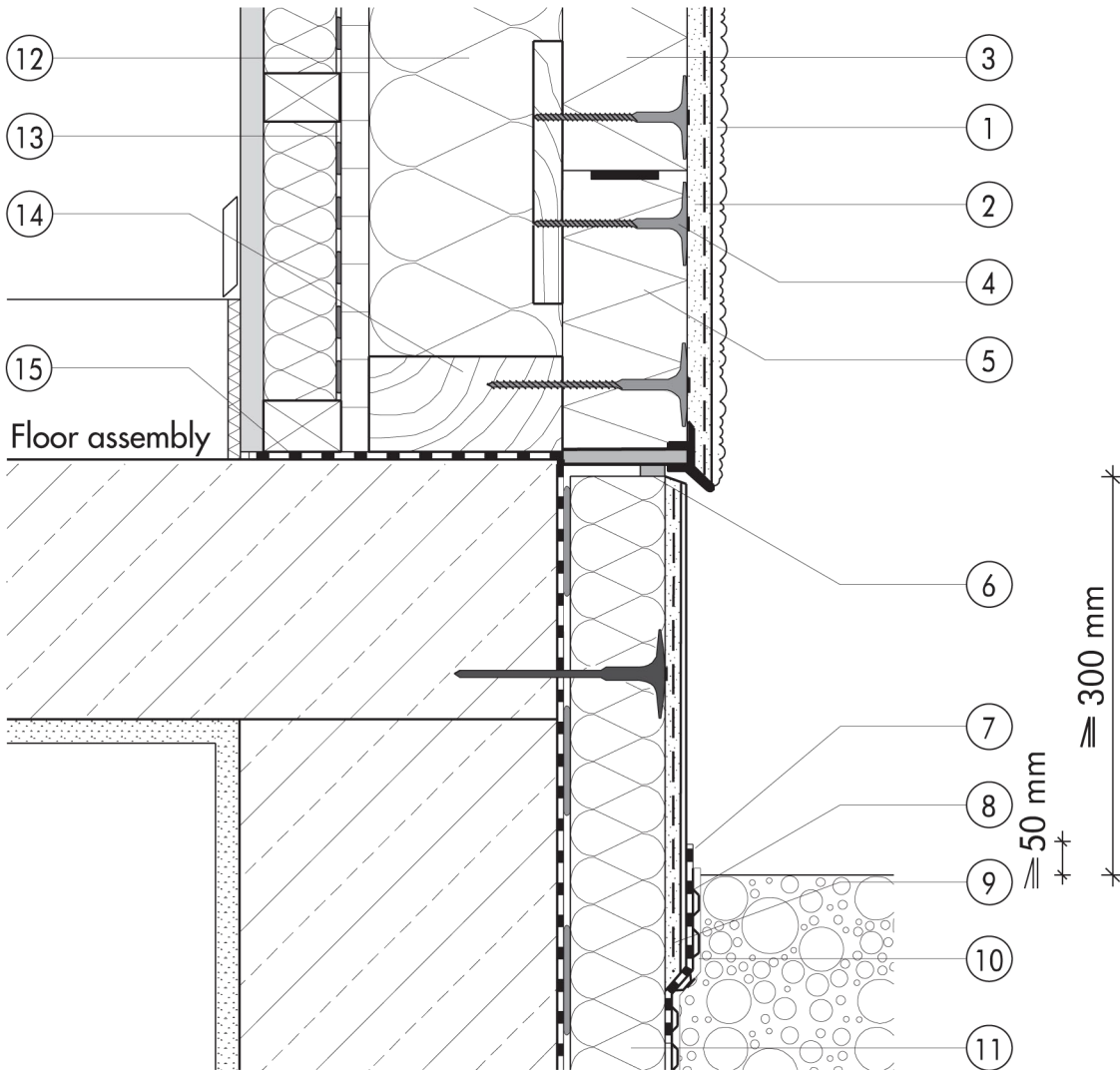


## 2.2 Plinth detailing

**2.2.08a Timber studwork directly  
faced with THD N+F, with  
Quix starter blocks at plinth**

## 2.2



- |   |   |   |  |
|---|---|---|--|
| ① | Finish render, where necessary with paint coating or impregnation (e.g. NOBLO, SP 260, conni S) | ⑨ | Reinforcing layer (SOCKEL-SM, scrim)               |
| ② | Reinforcing layer (SM700, scrim)  | ⑩ | Nonwoven-faced studded sheet                       |
| ③ | THD N+F insulation board  | ⑪ | Plinth insulation (Sd 035 plinth insulation board) |
| ④ | System fastener (THD fastener set)  | ⑫ | Cavity-wall insulation                             |
| ⑤ | Square-Edge Quix starter system   | ⑬ | Vapour check where necessary                       |
| ⑥ | Joint sealing tape  | ⑭ | Timber studwork                                    |
| ⑦ | Mineral waterproof membrane (SOCKEL-DICHT)  | ⑮ | Basement waterproofing                             |
| ⑧ | Felt-float render finish with two coats of paint (SOCKEL-SM, DER HAFTPUTZ)                      |   |  |