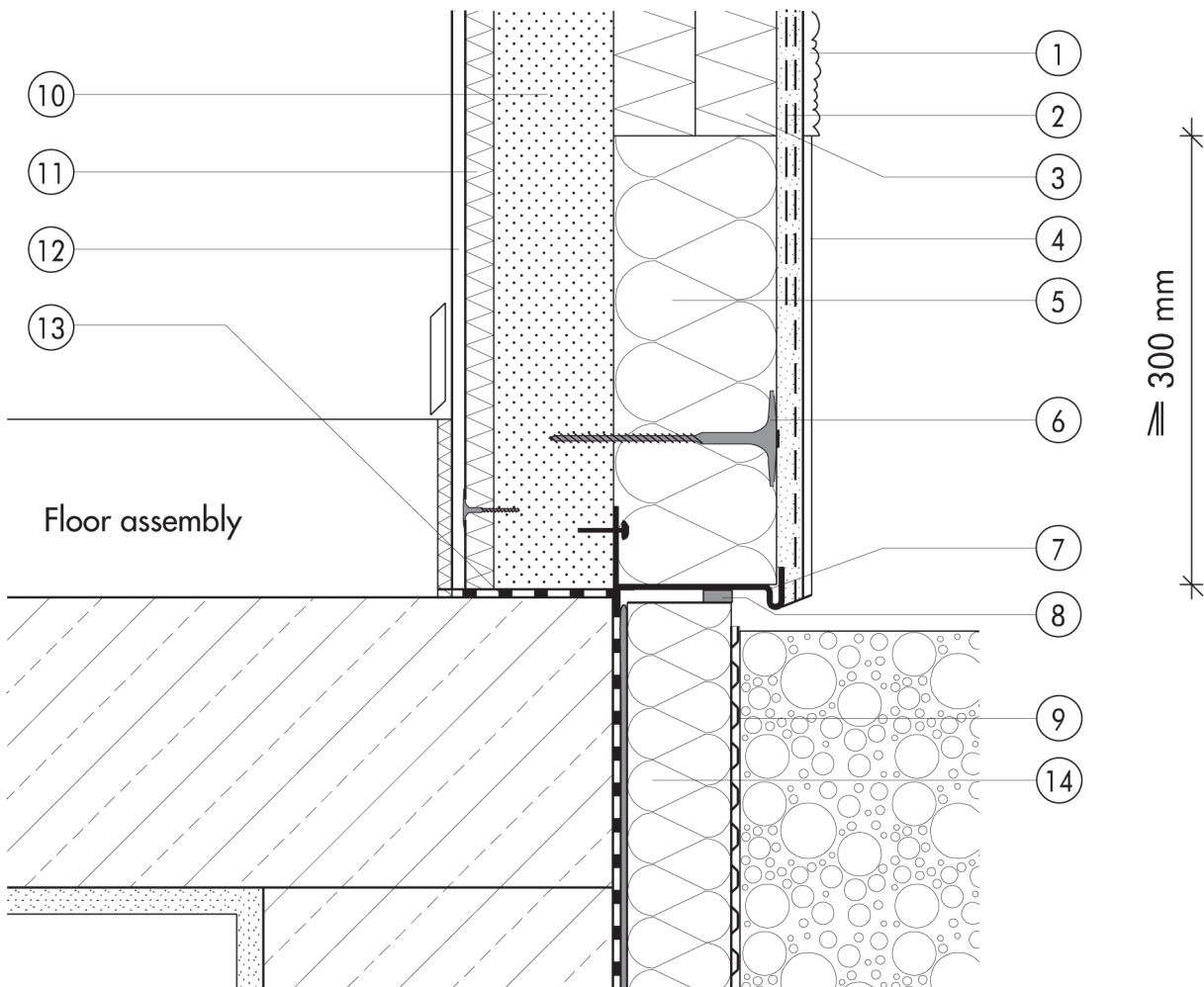


2.2 Plinth detailing

2.2.07 Solid timber construction directly faced with DIFFUTHERM in areas subject to splashing

2.2



- | | | | |
|---|---|---|--|
| ① | Finish render, where necessary with paint coating or impregnation (e.g. NOBLO, SP 260, conni S) | ⑧ | Joint sealing tape |
| ② | Reinforcing layer (SM700, SOCKEL-SM, scrim) | ⑨ | Nonwoven-faced studded sheet |
| ③ | DIFFUTHERM insulation board, 60 mm (double-layer, staggered joints) | ⑩ | Solid timber wall |
| ④ | Felt-float render finish with two coats of paint (SOCKEL-SM, DER HAFTPUTZ) | ⑪ | DIFFUTHERM jamb insulation board (20 mm), screwed |
| ⑤ | Plinth insulation (Sd 035 plinth insulation board) | ⑫ | Internal plaster with scrim (ROTKALK system) |
| ⑥ | System fastener (TERMOFIX H) | ⑬ | Basement waterproofing |
| ⑦ | Stop bead | ⑭ | Below-ground insulation (Pd 035 below-ground insulation board) |