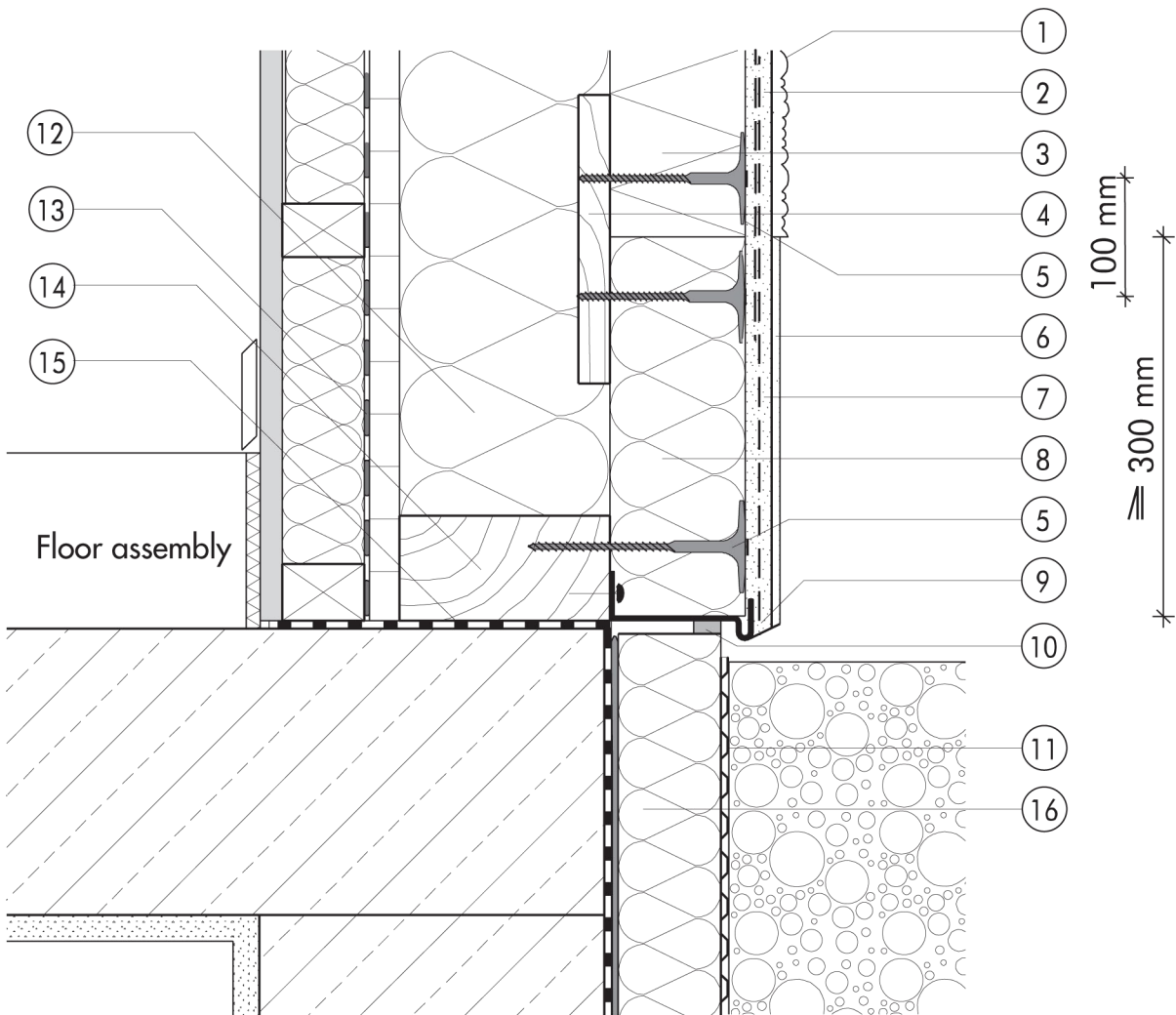


2.2 Plinth detailing

2.2.04 Timber studwork directly faced with DIFFUTHERM in areas subject to splashing


2.2

- | | | | |
|---|---|---|--|
| ① | Finish render, where necessary with paint coating or impregnation (e.g. NOBLO, SP 260, conni S) | ⑨ | Stop bead |
| ② | Reinforcing layer (SM700, scrim) | ⑩ | Joint sealing tape |
| ③ | DIFFUTHERM insulation board | ⑪ | Nonwoven-faced studded sheet |
| ④ | Splice board | ⑫ | Cavity-wall insulation |
| ⑤ | System fastener (TERMOFIX H) | ⑬ | Vapour check where necessary |
| ⑥ | Felt-float render finish with two coats of paint (SOCKEL-SM) | ⑭ | Timber studwork |
| ⑦ | Reinforcing layer (SOCKEL-SM, scrim) | ⑮ | Basement waterproofing |
| ⑧ | Plinth insulation (Sd 035 plinth insulation board) | ⑯ | Below-ground insulation (Pd 035 below-ground insulation board) |