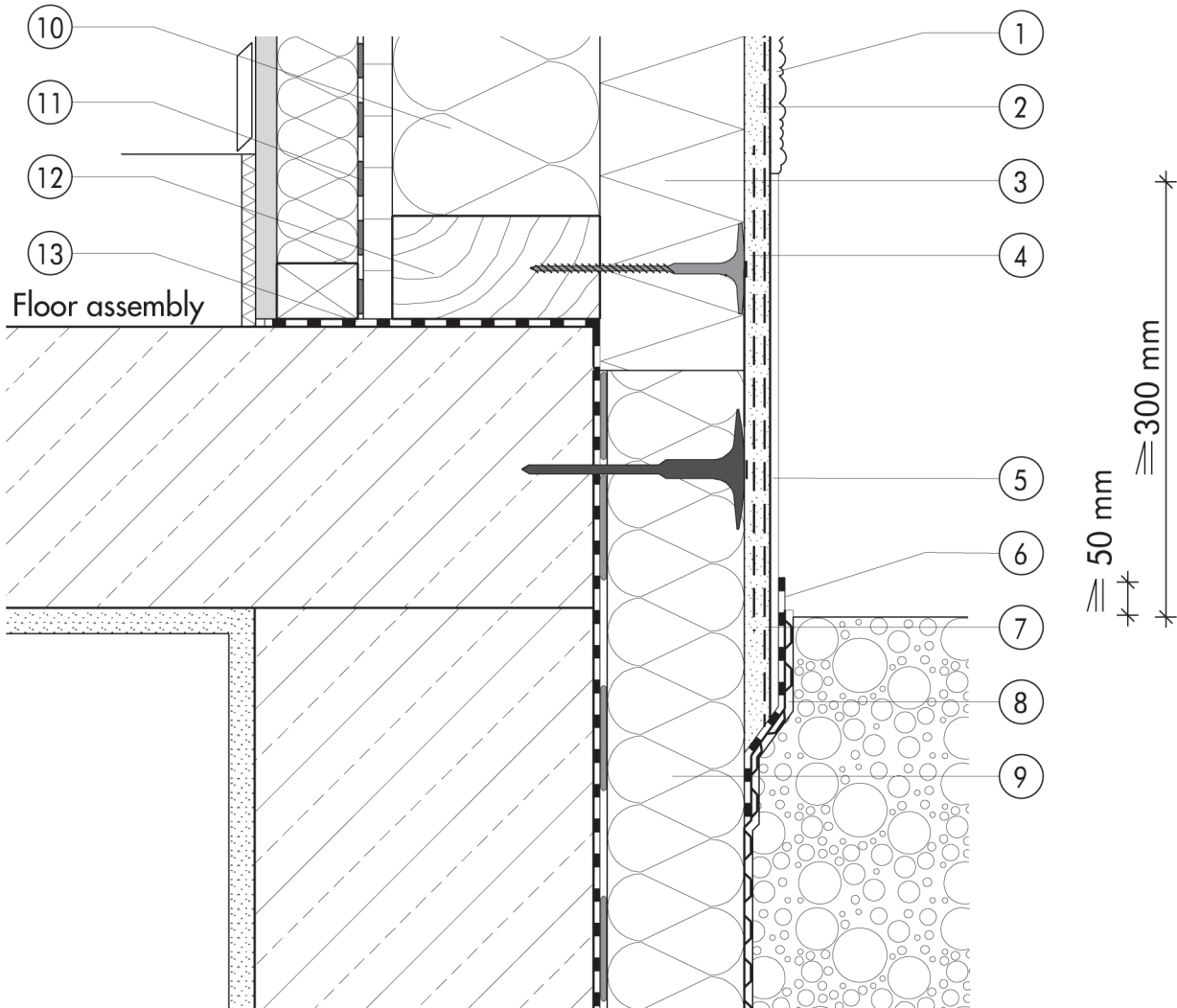


## 2.2 Plinth detailing

**2.2.03a Timber studwork directly  
faced with THD N+F, plinth  
flush**


2.2

- |   |   |   |  |
|---|---|---|--|
| ① | Finish render, where necessary with paint coating or impregnation (e.g. NOBLO, SP 260, conni S) | ⑧ | Nonwoven-faced studded sheet                       |
| ② | Reinforcing layer (SM700, scrim)  | ⑨ | Plinth insulation (Sd 035 plinth insulation board) |
| ③ | THD N+F insulation board  | ⑩ | Cavity-wall insulation                             |
| ④ | System fastener (THD fastener set)  | ⑪ | Vapour check where necessary                       |
| ⑤ | Felt-float render finish with two coats of paint (SOCKEL-SM, DER HAFTPUTZ)                      | ⑫ | Timber studwork                                    |
| ⑥ | Mineral waterproof membrane (SOCKEL-DICHT)  | ⑬ | Basement waterproofing                             |
| ⑦ | Reinforcing layer (SOCKEL-SM, scrim)  |   |  |