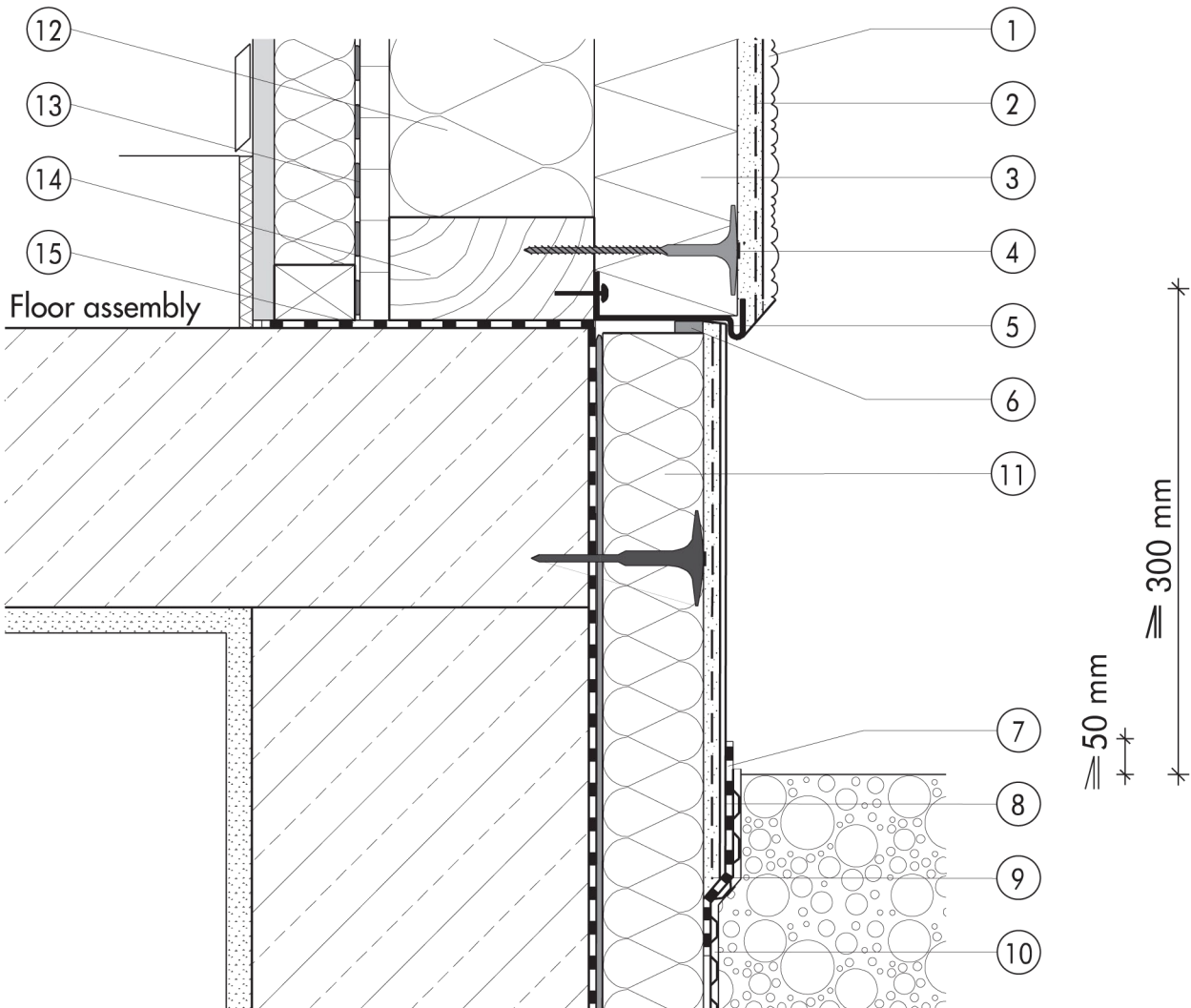


## 2.2 Plinth detailing

**2.2.02a Timber studwork directly  
faced with THD N+F, with  
starter track at plinth**


## 2.2

- |  |   |
|--|---|
| <ul style="list-style-type: none"> <li>① Finish render, where necessary with paint coating or impregnation (e.g. NOBLO, SP 260, conni S)</li> <li>② Reinforcing layer (SM700, Lustro, scrim)</li> <li>③ THD N+F insulation board</li> <li>④ System fastener (THD fastener set)</li> <li>⑤ Stop bead</li> <li>⑥ Joint sealing tape</li> <li>⑦ Mineral waterproof membrane (SOCKEL-DICHT)</li> <li>⑧ Felt-float render finish with two coats of paint (SOCKEL-SM, DER HAFTPUTZ)</li> </ul> | <ul style="list-style-type: none"> <li>⑨ Reinforcing layer (SOCKEL-SM, scrim)</li> <li>⑩ Nonwoven-faced studded sheet</li> <li>⑪ Plinth insulation (Sd 035 plinth insulation board)</li> <li>⑫ Cavity-wall insulation</li> <li>⑬ Vapour check where necessary</li> <li>⑭ Timber studwork</li> <li>⑮ Basement waterproofing</li> </ul> |
|--|---|