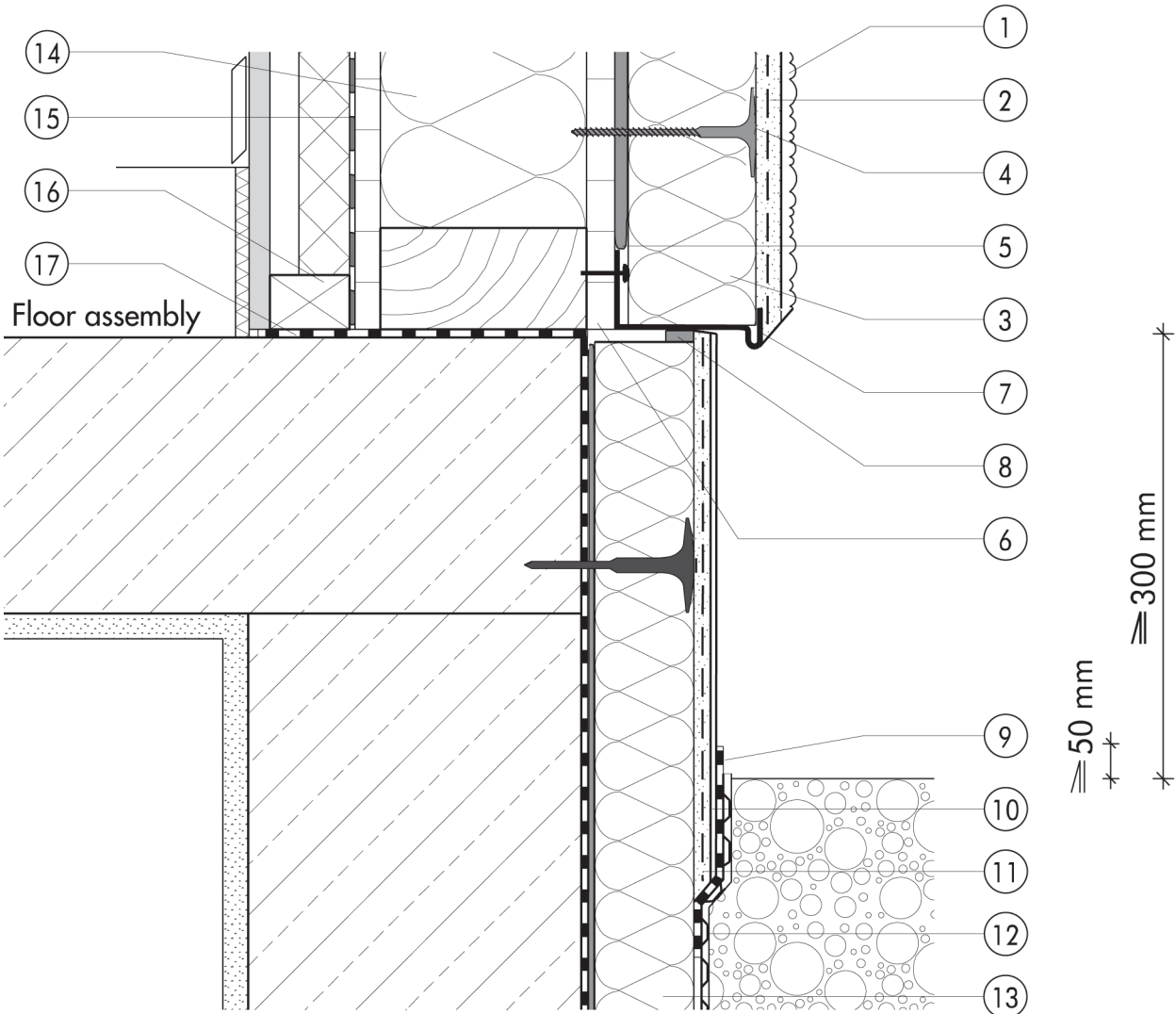


2.2 Plinth detailing

2.2.01 Timber studwork with ETICS applied to panel product, with starter track at plinth

2.2



- | | |
|---|---|
| <ul style="list-style-type: none"> ① Finish render, where necessary with paint coating or impregnation (e.g. NOBLO, SP 260, conni S) ② Reinforcing layer (SM700, Lustro, scrim) ③ Insulation (STYROPOR®) ④ System fastener (TERMOFIX H) ⑤ Bonding mortar (PASTOL, SM700, Lustro) ⑥ Panel product, min. 12 mm ⑦ Stop bead ⑧ Joint sealing tape ⑨ Mineral waterproof membrane (SOCKEL-DICHT) | <ul style="list-style-type: none"> ⑩ Felt-float render finish with two coats of paint (SOCKEL-SM, DER HAFTPUTZ) ⑪ Reinforcing layer (SOCKEL-SM, scrim) ⑫ Nonwoven-faced studded sheet ⑬ Plinth insulation (Sd 035 plinth insulation board) ⑭ Cavity-wall insulation ⑮ Vapour check where necessary ⑯ Timber studwork ⑰ Basement waterproofing |
|---|---|