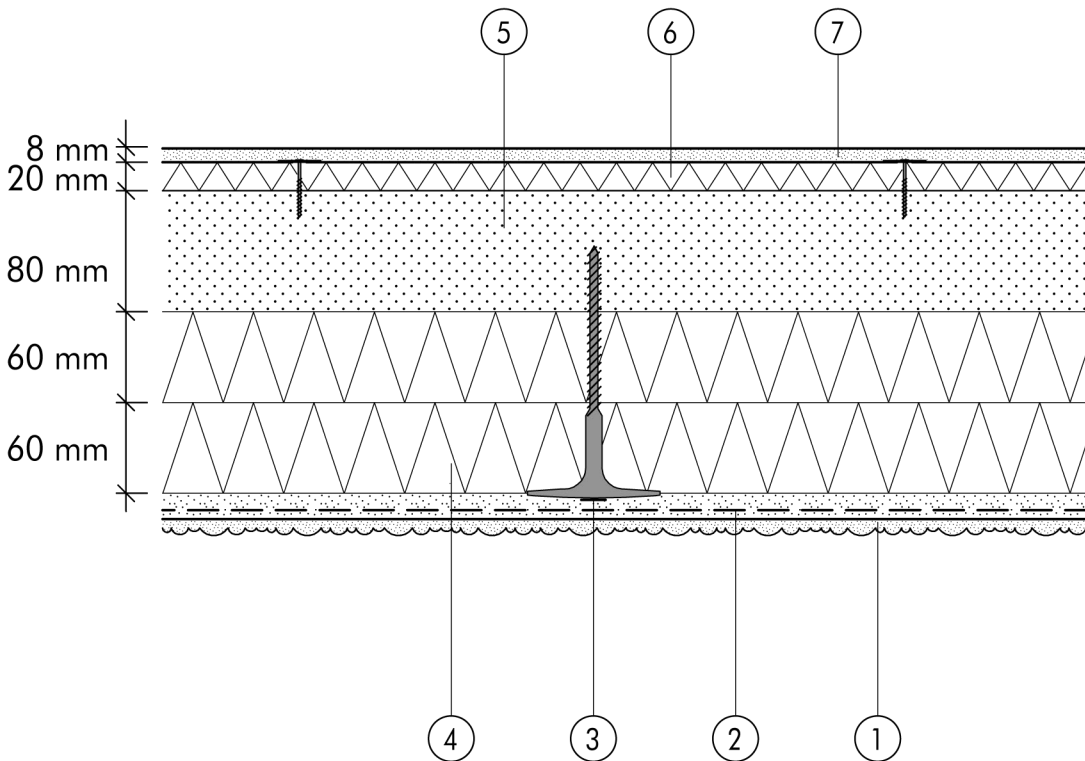


2.1 Standard assemblies

**2.1.08b Solid timber construction**
**double-faced with**
**DIFFUTHERM, fastener-fixed**

2.1



- ① Finish render, where necessary with paint coating or impregnation (e.g. NOBLO, SP 260, conni S)
- ② Reinforcing layer (SM700, scrim)
- ③ System fastener (TERMOFIX H)
- ④ DIFFUTHERM insulation board, 60 mm

- ⑤ Solid timber wall
- ⑥ DIFFUTHERM jamb insulation board (20 mm), screwed
- ⑦ Internal plaster with scrim (ROTKALK system)