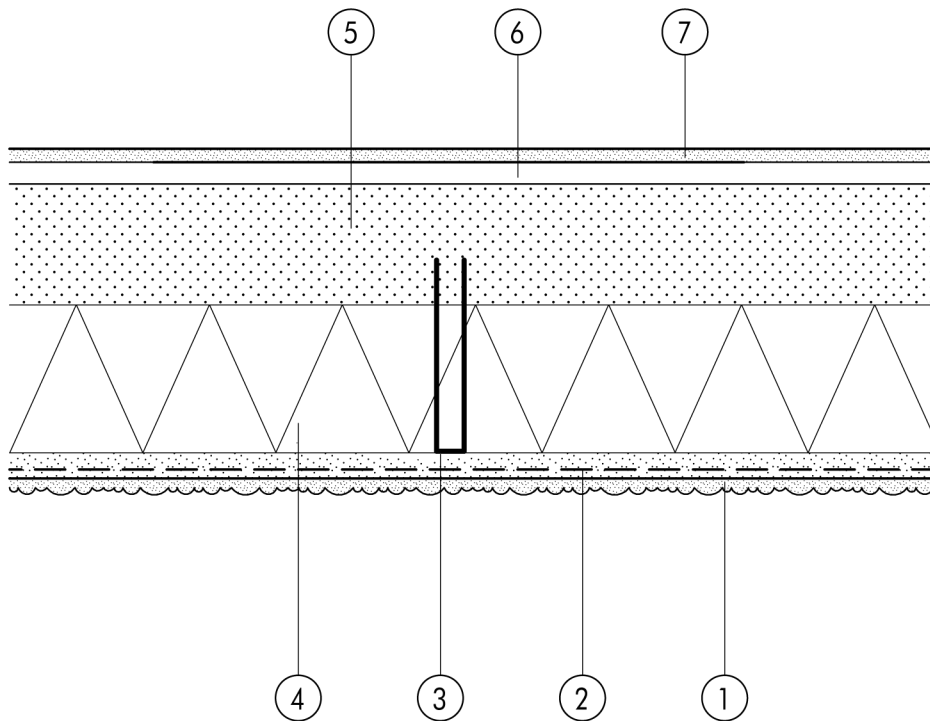


2.1 Standard assemblies

2.1.08a Solid timber construction
directly faced with
DIFFUTHERM, stapled

2.1



- ① Finish render, where necessary with paint coating or impregnation (e.g. NOBLO, SP 260, conni S)
- ② Reinforcing layer (SM700, scrim)
- ③ 27 mm stainless steel wide-crown staples, 1.8 mm dia, to DIN 1052-2, pointside penetration \geq 30 mm
- ④ DIFFUTHERM insulation board, 100 mm (stapled)

- ⑤ Solid timber wall
- ⑥ Battening and air layer (service runs)
- ⑦ Gypsum fibreboard or fire-resistant gypsum wallboard lining