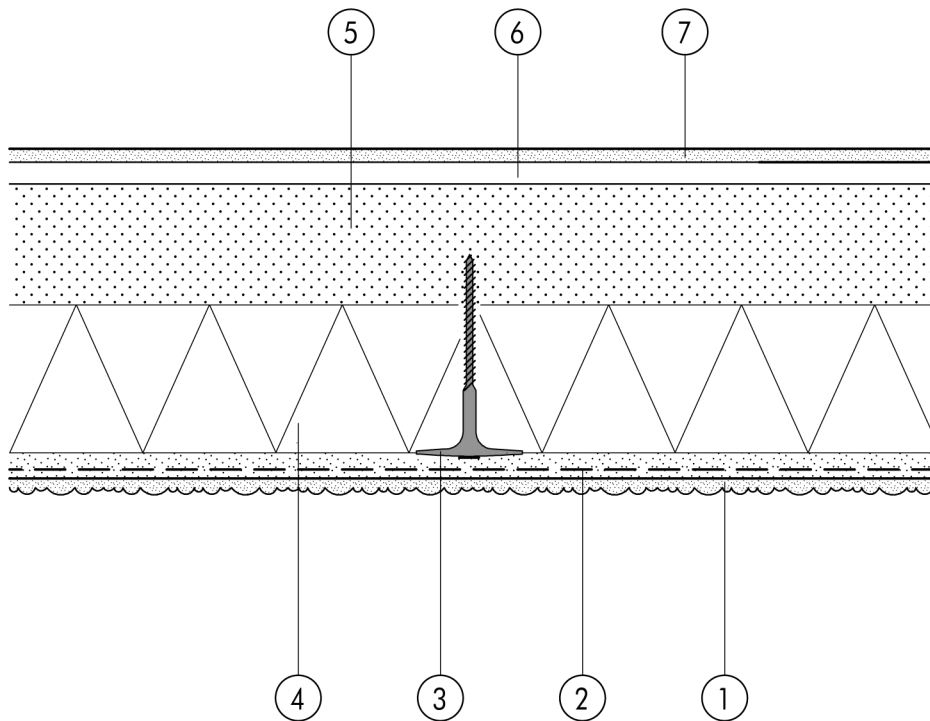


2.1 Standard assemblies

2.1.08 Solid timber construction directly faced with DIFFUTHERM, fastener-fixed

2.1



- ① Finish render, where necessary with paint coating or impregnation (e.g. NOBLO, SP 260, conni S)
- ② Reinforcing layer (SM700, scrim)
- ③ System fastener (TERMOFIX H)
- ④ DIFFUTHERM insulation board, 100 mm (fastener-fixed)

- ⑤ Solid timber wall
- ⑥ Battening and air layer (service runs)
- ⑦ Gypsum fibreboard or fire-resistant gypsum wallboard lining