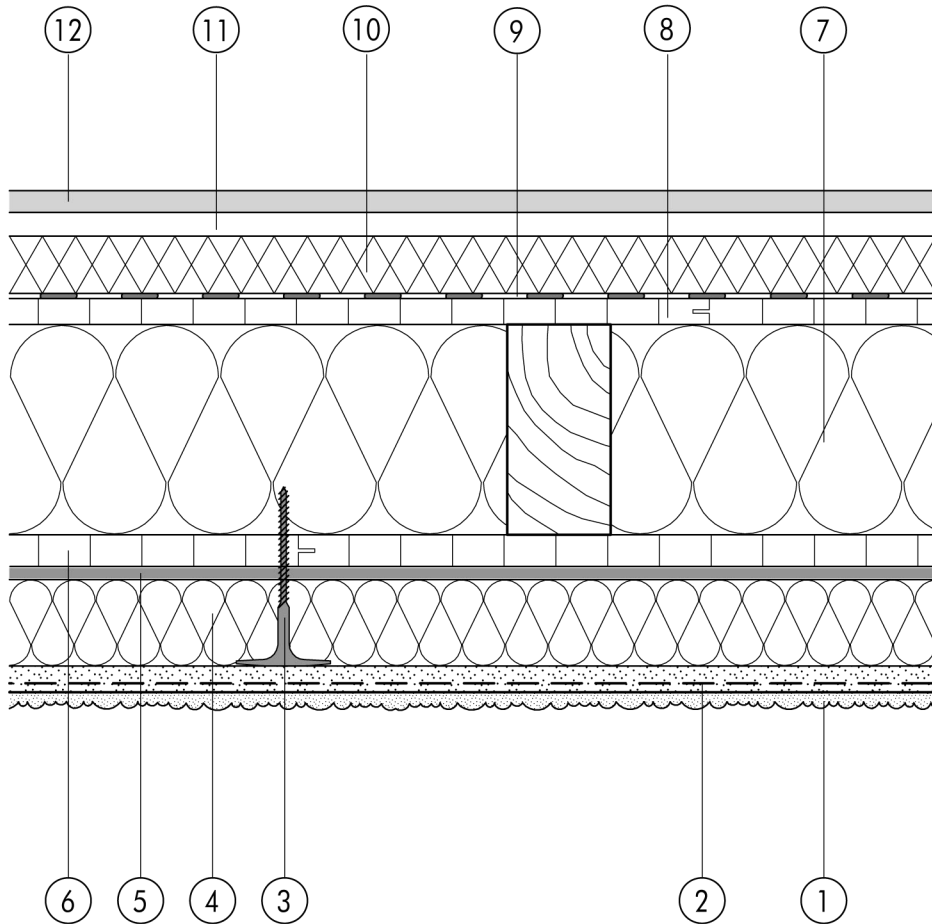


2.1 Standard assemblies

**2.1.01 Timber studwork with ETICS
applied to panel product**

2.1



- | | |
|--|--|
| <ul style="list-style-type: none"> ① Finish render, where necessary with paint coating or impregnation (e.g. NOBLO, SP 260, conni S) ② Reinforcing layer (SM700, scrim) ③ System fastener (TERMOFIX H) ④ Insulation (STYROPOR®) ⑤ Bonding mortar (PASTOL, SM700, Lustro) ⑥ Panel product, min. 12 mm | <ul style="list-style-type: none"> ⑦ Cavity-wall insulation ⑧ Stiffening wood-based panel facing ⑨ Vapour check where necessary ⑩ Mineral-fibre joint backing ⑪ Battening and air layer (service runs) ⑫ Gypsum fibreboard or fire-resistant gypsum wallboard lining |
|--|--|