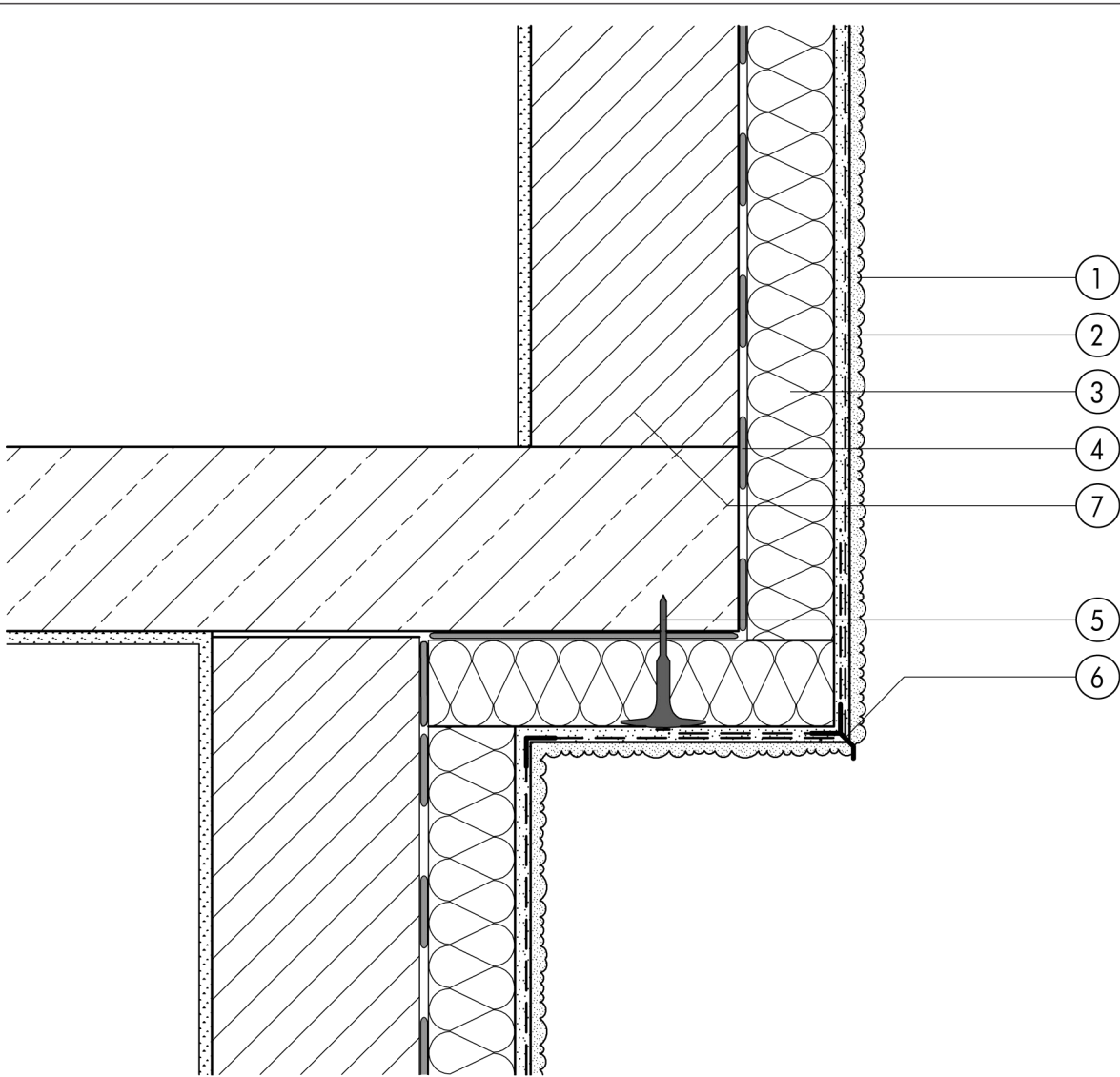


1.9 Miscellaneous

1.9.03 Recess in facade with drip



1.9

- ① Finish render, where necessary with paint coating or impregnation (e.g. NOBLO, SP 260, conni S)
- ② Reinforcing layer (SM700, Lustro, scrim)
- ③ Insulation (STYROPOR®, MINERAL FIBRE)
- ④ Bonding mortar (SM700, Lustro)
- ⑤ System fastener
- ⑥ Stop bead with drip
- ⑦ Masonry