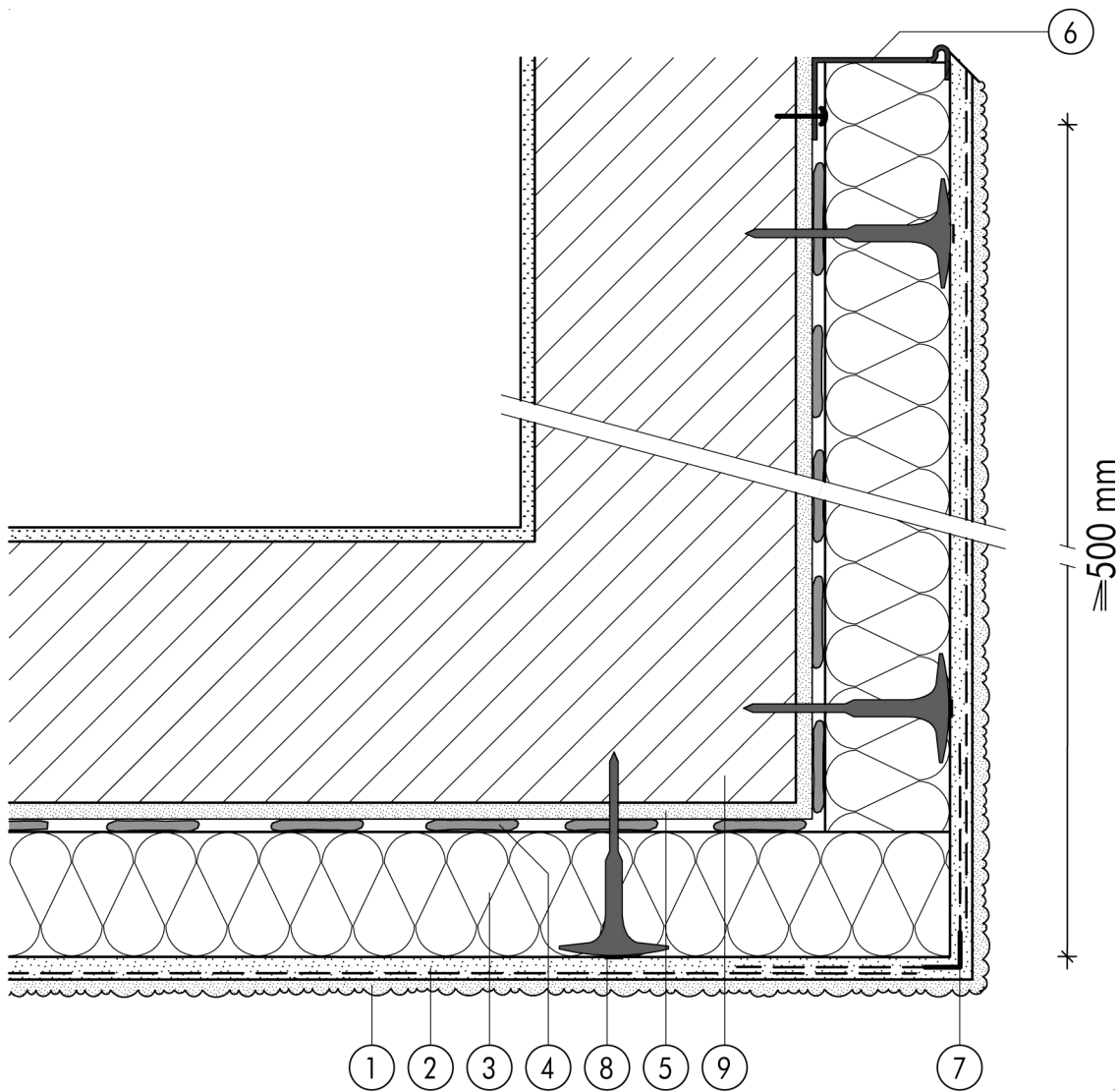


1.9 Miscellaneous

**1.9.02 Partial-area insulation without thermal bridging at external building angle**



- |  |   |
|--|---|
| <ul style="list-style-type: none"> <li>1 Finish render, where necessary with paint coating or impregnation (e.g. NOBLO, SP 260, conni S)</li> <li>2 Reinforcing layer (SM700, Lustro, scrim)</li> <li>3 Insulation (STYROPOR®, MINERAL FIBRE)</li> <li>4 Bonding mortar (SM700, Lustro)</li> <li>5 Existing plasterwork</li> </ul> | <ul style="list-style-type: none"> <li>6 Stop bead anchored</li> <li>7 Angle bead with scrim</li> <li>8 System fastener</li> <li>9 Masonry</li> </ul> |
|--|---|

1.9