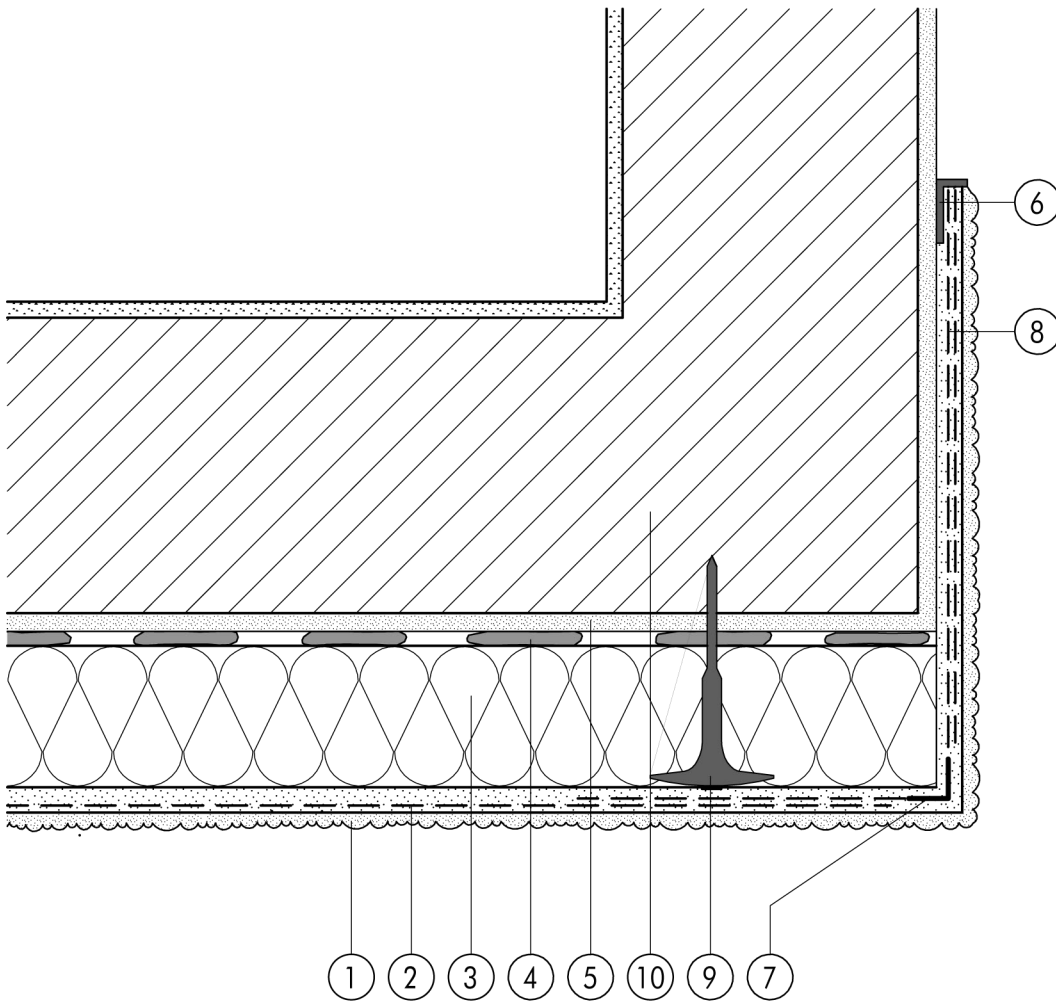


1.9	Miscellaneous
1.9.01	Partial-area insulation - junction with non-insulated area



1.9

- ① Finish render, where necessary with paint coating or impregnation (e.g. NOBLO, SP 260, conni S)
- ② Reinforcing layer (SM700, Lustro, scrim)
- ③ Insulation (STYROPOR®, MINERAL FIBRE)
- ④ Bonding mortar (SM700, Lustro)
- ⑤ Existing plasterwork
- ⑥ Stop bead with scrim
- ⑦ Angle bead with scrim
- ⑧ Double scrim layer at transition
- ⑨ System fastener
- ⑩ Masonry