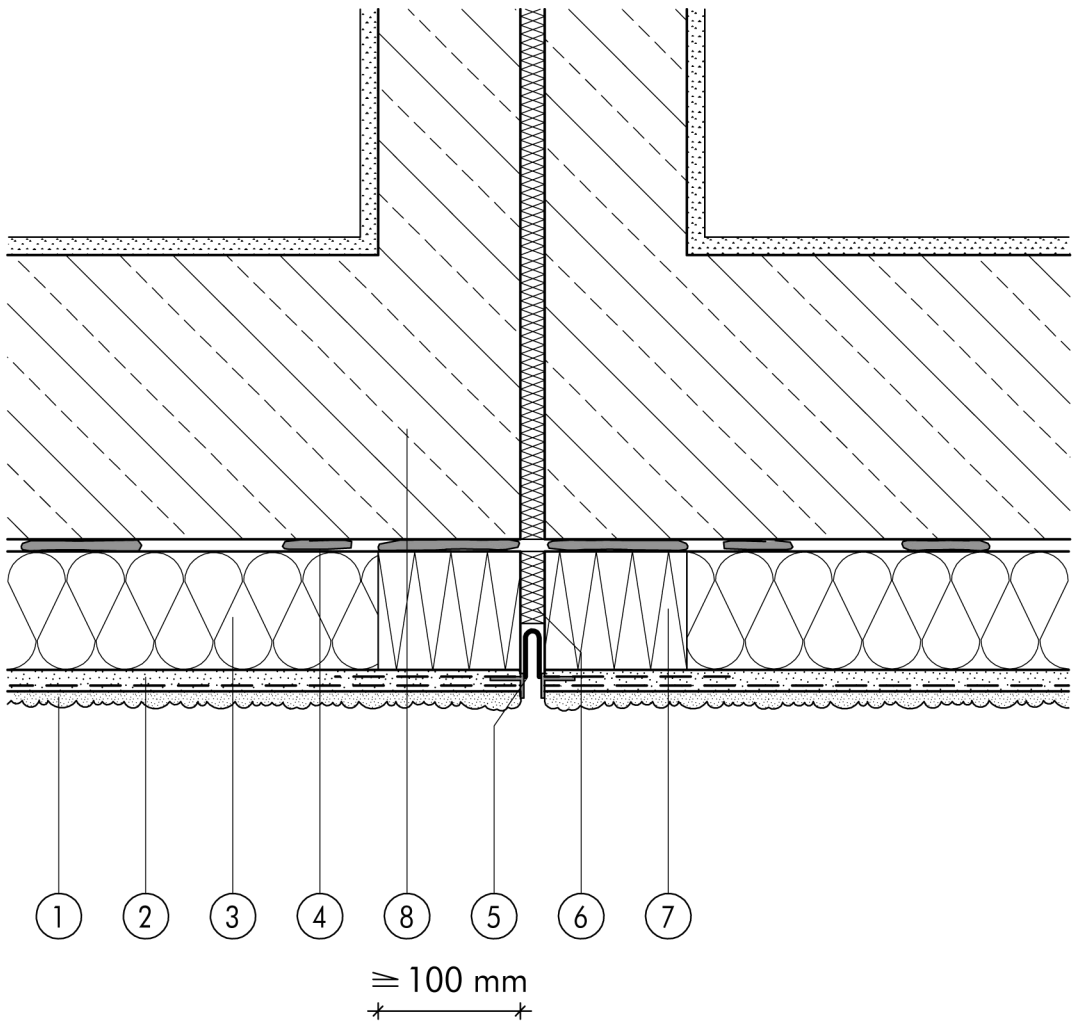


| | |
|---------------|---|
| 1.8 | Fire protection measures |
| 1.8.06 | Incorporation of expansion joint in area of external fire spread |

1.8



- | | |
|---|---|
| <ul style="list-style-type: none"> ① Finish render, where necessary with paint coating or impregnation (e.g. NOBLO, SP 260, conni S) ② Reinforcing layer (SM700, Lustro, scrim) ③ Insulation (STYROPOR®) ④ Bonding mortar (SM700, Lustro) | <ul style="list-style-type: none"> ⑤ Expansion bead ⑥ Mineral-fibre joint backing ⑦ Mineral-fibre plank on either side min. 10 cm wide (e.g. volamit) ⑧ Masonry |
|---|---|