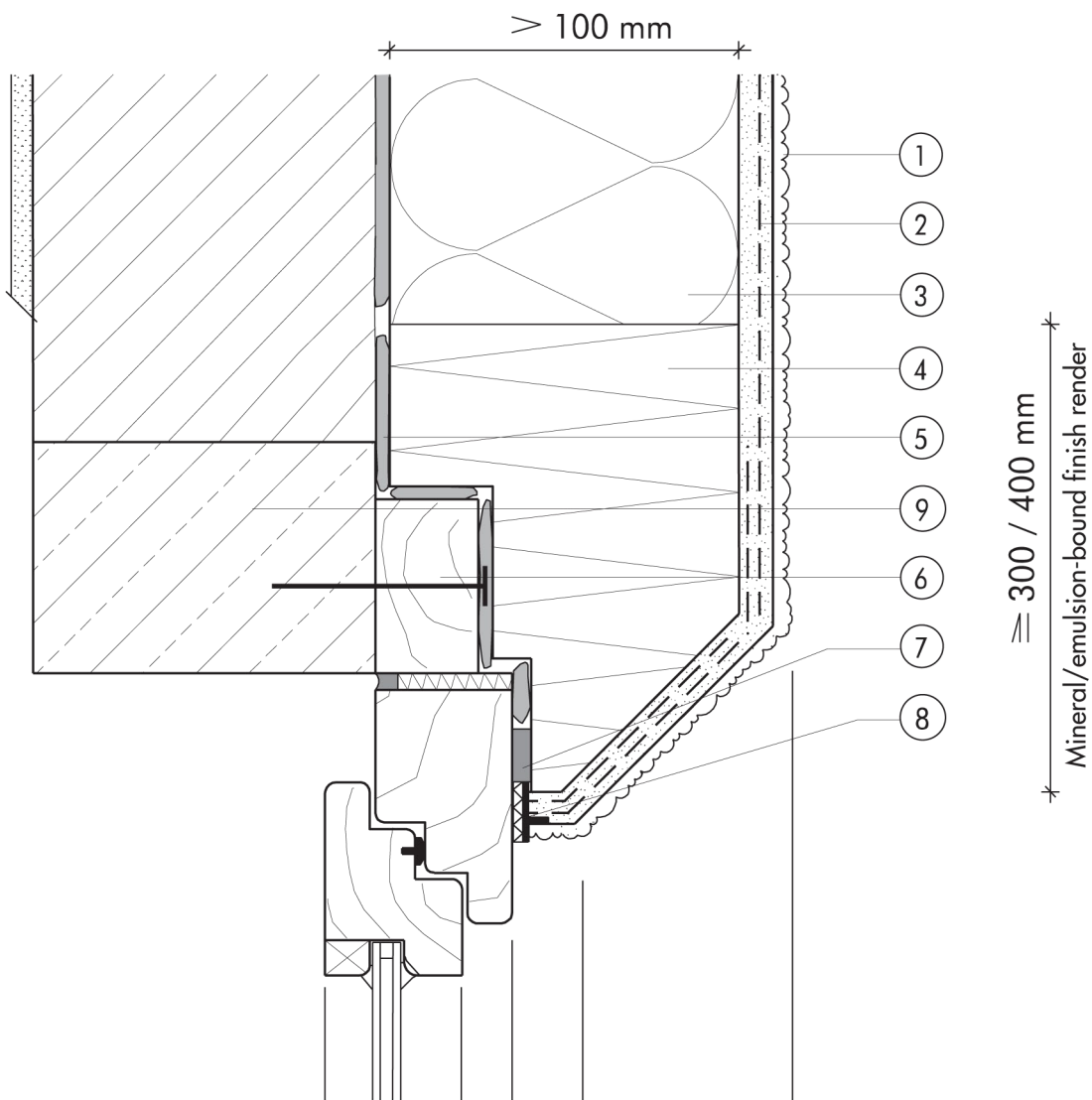


| | |
|---------------|-----------------------------------|
| 1.8 | Fire protection measures |
| 1.8.05 | Lintel construction |
| | incorporating LICHTKEIL as |
| | fire barrier |



- | | |
|--|--|
| <ul style="list-style-type: none"> ① Finish render, where necessary with paint coating or impregnation (e.g. NOBLO, SP 260, conni S) ② Reinforcing layer (SM700, Lustro, scrim) ③ STYROPOR® insulation board > 100 mm ④ LICHTKEIL made from mineral-fibre plank around full perimeter to jambs and lintel ⑤ Bonding mortar (SM700, Lustro) | <ul style="list-style-type: none"> ⑥ Timber supporting frame ⑦ Joint sealing tape ⑧ Stop bead with scrim ⑨ Reinforced-concrete window lintel |
|--|--|

1.8