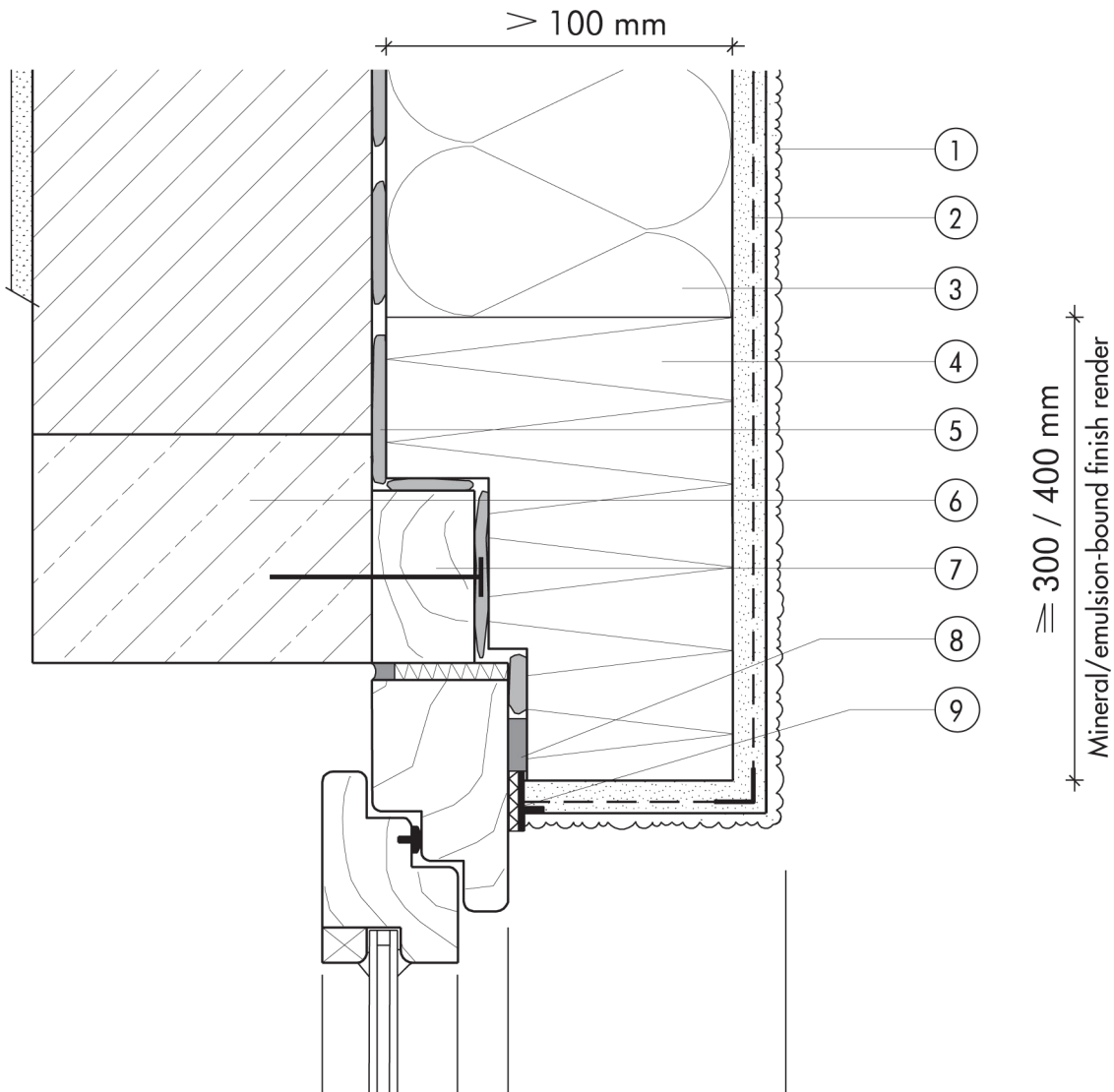


1.8 Fire protection measures

1.8.04 Lintel construction with volamit for windows proud of structural wall



- | | | | |
|---|---|---|-----------------------------------|
| ① | Finish render, where necessary with paint coating or impregnation (e.g. NOBLO, SP 260, conni S) | ⑥ | Reinforced-concrete window lintel |
| ② | Reinforcing layer (SM700, Lustro, scrim) | ⑦ | Timber supporting frame |
| ③ | STYROPOR® insulation board > 100 mm | ⑧ | Joint sealing tape |
| ④ | Mineral-fibre plank around full perimeter to jambs and lintel (e.g. volamit) | ⑨ | Stop bead with scrim |
| ⑤ | Bonding mortar (SM700, Lustro) | | |