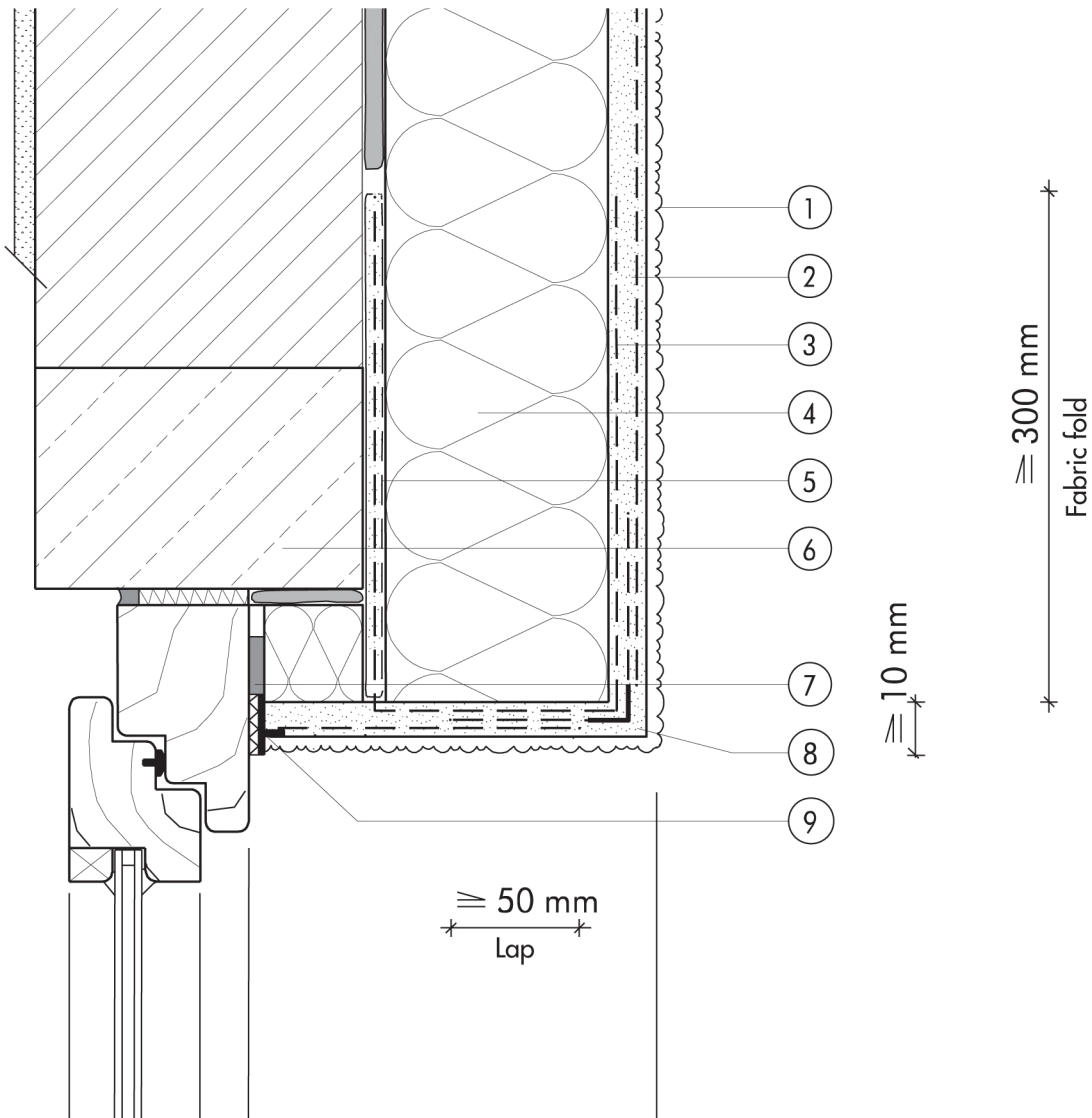


1.8 Fire protection measures

**1.8.02 Lintel construction with scrim fold**


- ① Finish render, where necessary with paint coating or impregnation (e.g. NOBLO, SP 260, conni S)
- ② Reinforcing layer (SM700, Lustro, scrim)
- ③ Scrim fold, fully bonded
- ④ STYROPOR® insulation board > 100 mm
- ⑤ Bonding mortar (SM700, Lustro)

- ⑥ Reinforced-concrete window lintel
- ⑦ Joint sealing tape
- ⑧ Angle bead with scrim
- ⑨ Stop bead with scrim

1.8