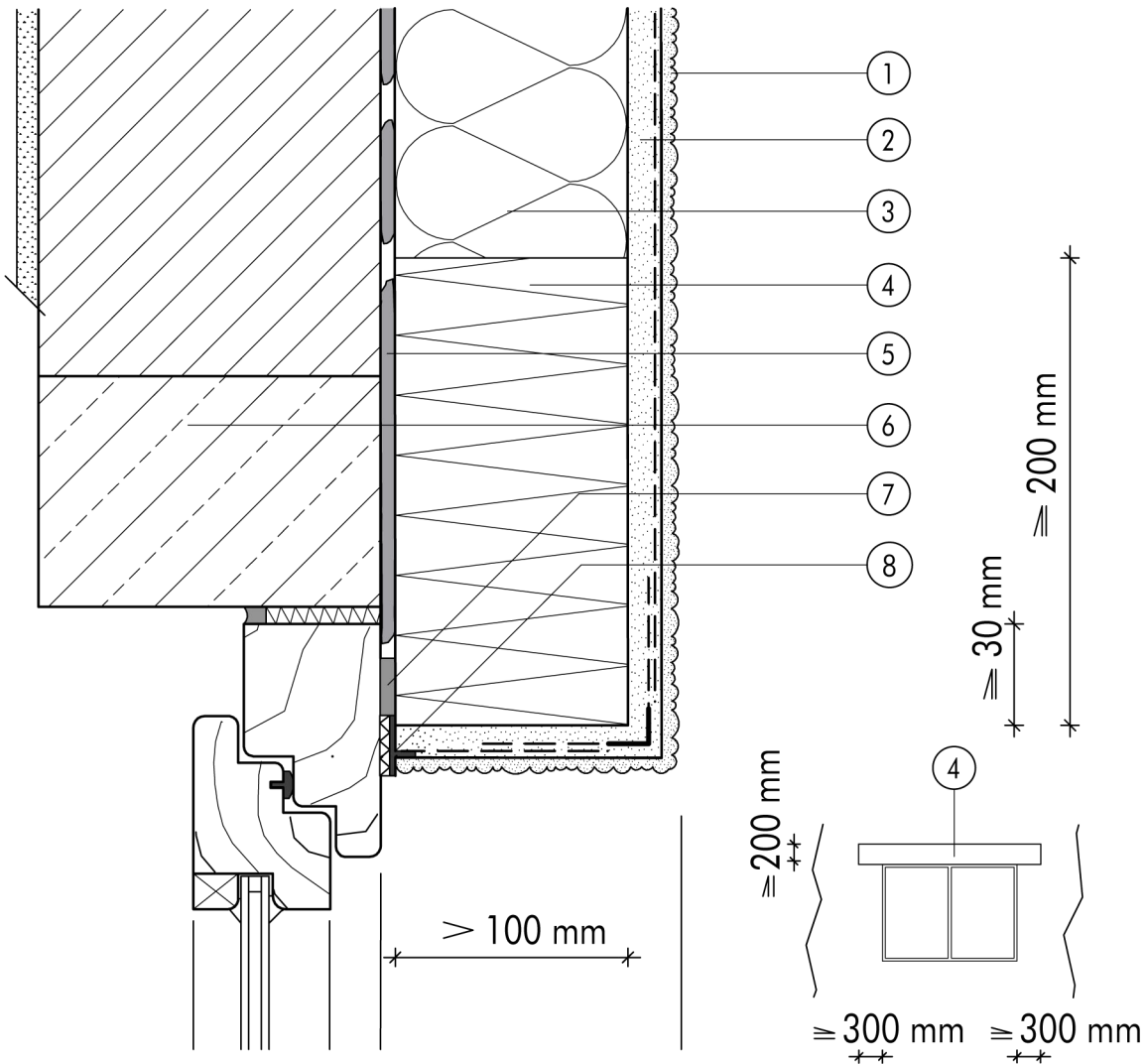


1.8 Fire protection measures

**1.8.01 Lintel construction
incorporating mineral-fibre
plank**


- ① Finish render, where necessary with paint coating or impregnation (e.g. NOBLO, SP 260, conni S)
- ② Reinforcing layer (SM700, Lustrò, scrim)
- ③ STYROPOR® insulation board > 100 mm
- ④ Mineral-fibre plank (e.g. volamit)

- ⑤ Bonding mortar (SM700, Lustrò)
- ⑥ Reinforced-concrete window lintel
- ⑦ Joint sealing tape
- ⑧ Stop bead with scrim