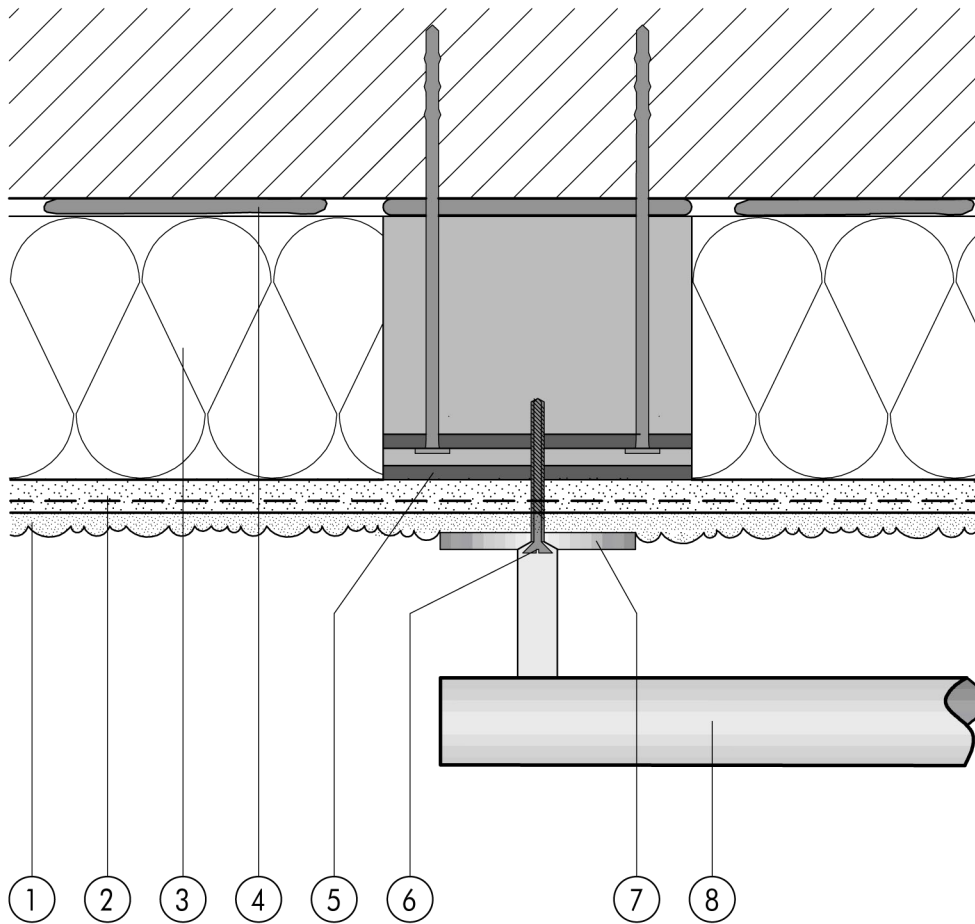


1.7 Fixings

1.7.06 Universal mounting plate for anchorage of heavy loads


1.7

- | | |
|---|--|
| <p>① Finish render, where necessary with paint coating or impregnation (e.g. NOBLO, SP 260, conni S)</p> <p>② Reinforcing layer (SM700, Lustro, scrim)</p> <p>③ Insulation (STYROPOR®, MINERAL FIBRE)</p> <p>④ Bonding mortar (SM700, Lustro)</p> | <p>⑤ Universal mounting plate with phenol resin board</p> <p>⑥ Screw with metric thread</p> <p>⑦ Anchor plate</p> <p>⑧ E.g. balustrade</p> |
|---|--|