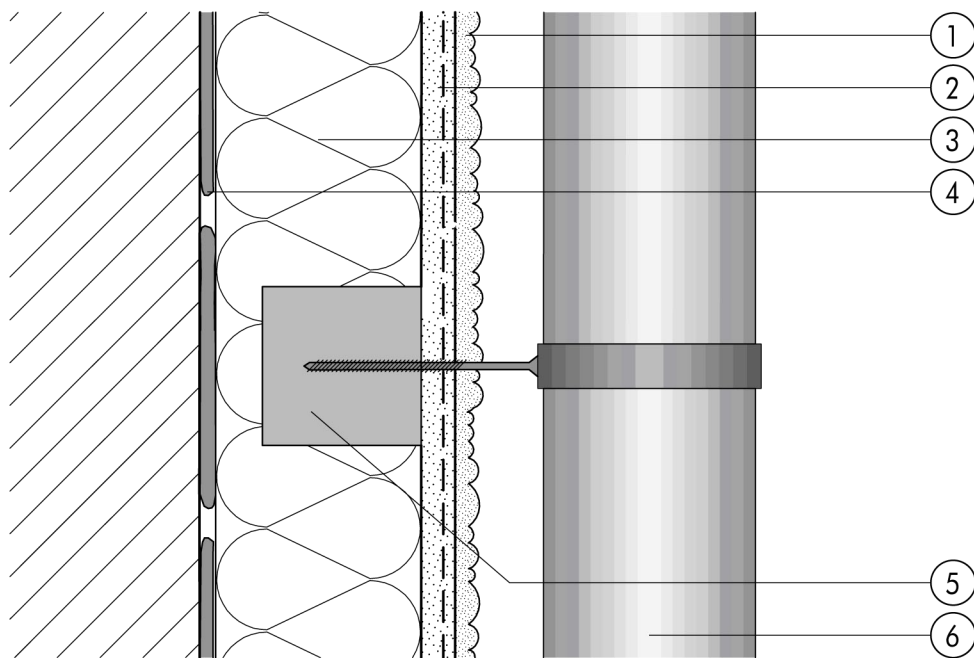


1.7 Fixings

**1.7.04 Zyrillo as anchorage base
for medium loads**


1.7

- ① Finish render, where necessary with paint coating or impregnation (e.g. NOBLO, SP 260, conni S)
- ② Reinforcing layer (SM700, Lustro, scrim)
- ③ Insulation (STYROPOR®, MINERAL FIBRE)

- ④ Bonding mortar (SM700, Lustro)
- ⑤ Zyrillo cylindrical plug
- ⑥ Rainwater downpipe