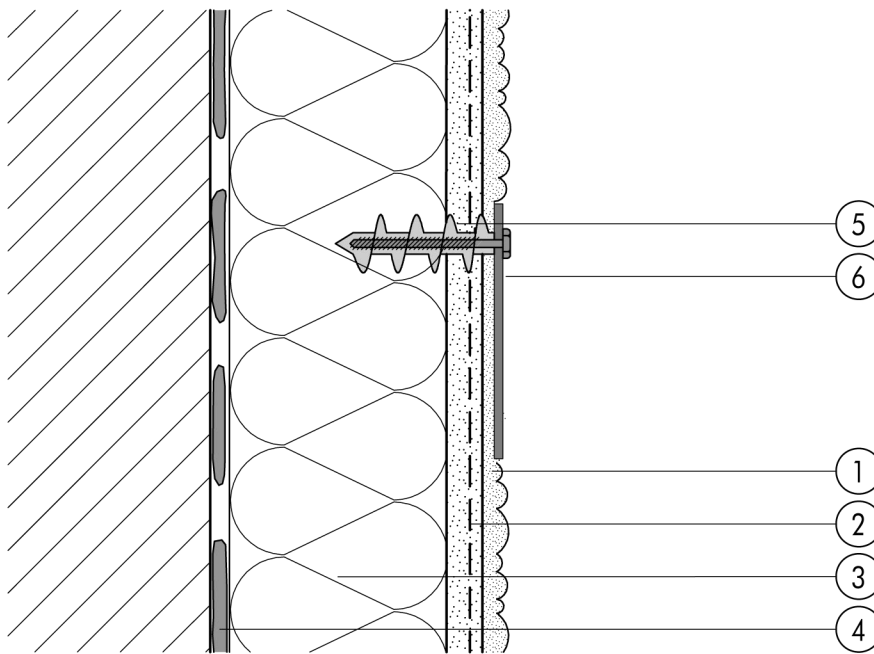


1.7 Fixings

1.7.02 FID 50 anchor for later fixing of light loads to insulation



1.7

- ① Finish render, where necessary with paint coating or impregnation (e.g. NOBLO, SP 260, conni S)
- ② Reinforcing layer (SM700, Lustro, scrim)
- ③ Insulation (STYROPOR®)
- ④ Bonding mortar (SM700, Lustro)
- ⑤ FID 50 anchor for fixing to insulation
- ⑥ E.g. advertising hoarding