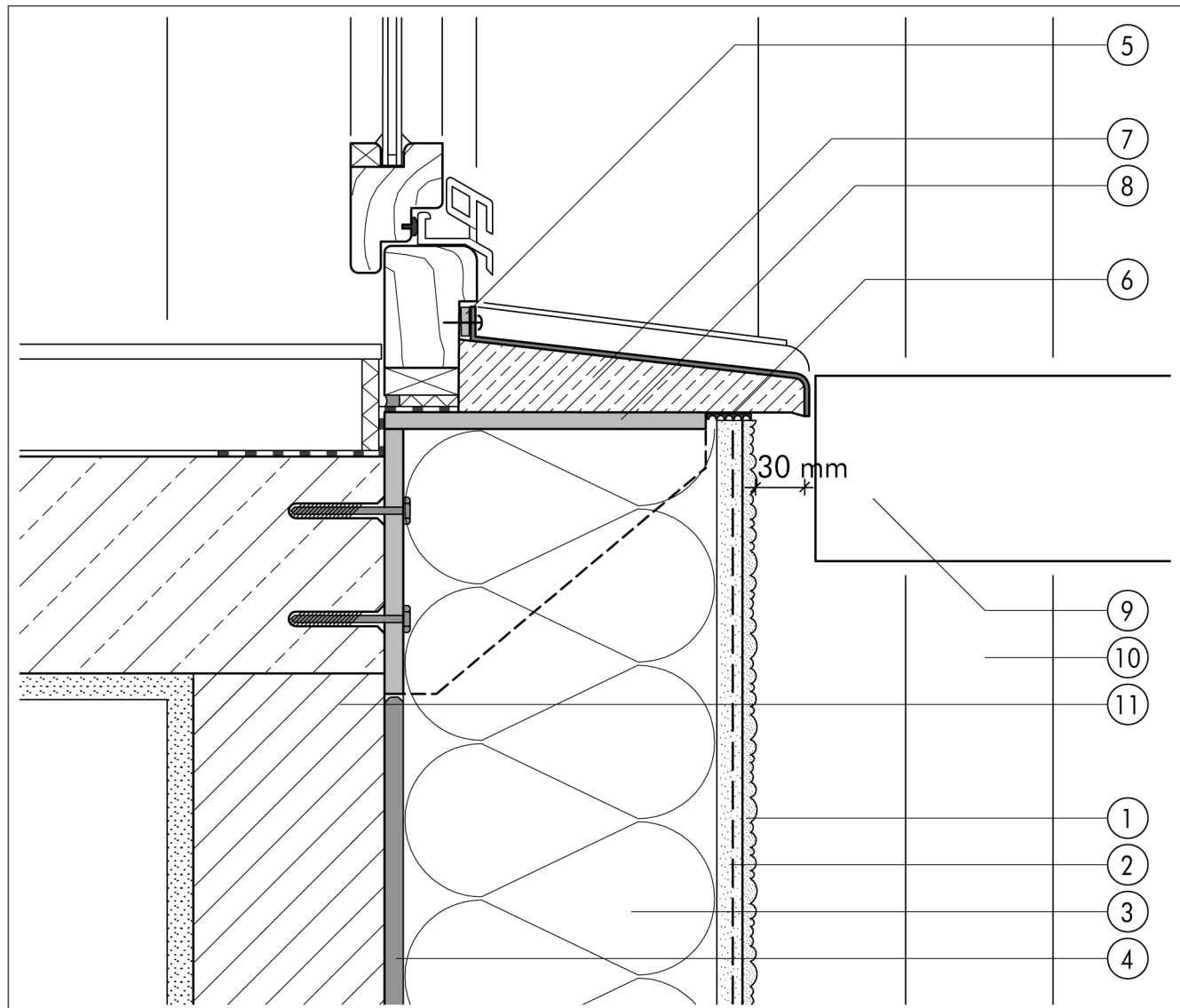


## 1.6 Balcony and patio junctions

**1.6.05 Threshold with bracket supports (front balcony)**


1.6

- |   |   |   |   |
|---|---|---|---|
| ① | Finish render, where necessary with paint coating or impregnation (e.g. NOBLO, SP 260, conni S) | ⑦ | Threshold                                 |
| ② | Reinforcing layer (SM700, Lustro, scrim)  | ⑧ | Thermal-bridge-free bracket for threshold |
| ③ | Insulation (STYROPOR®, MINERAL FIBRE)   | ⑨ | Front balcony                             |
| ④ | Bonding mortar (SM700, Lustro)  | ⑩ | Column                                    |
| ⑤ | Joint sealing tape  | ⑪ | Masonry                                   |
| ⑥ | Grooved compressible tape   |   |   |