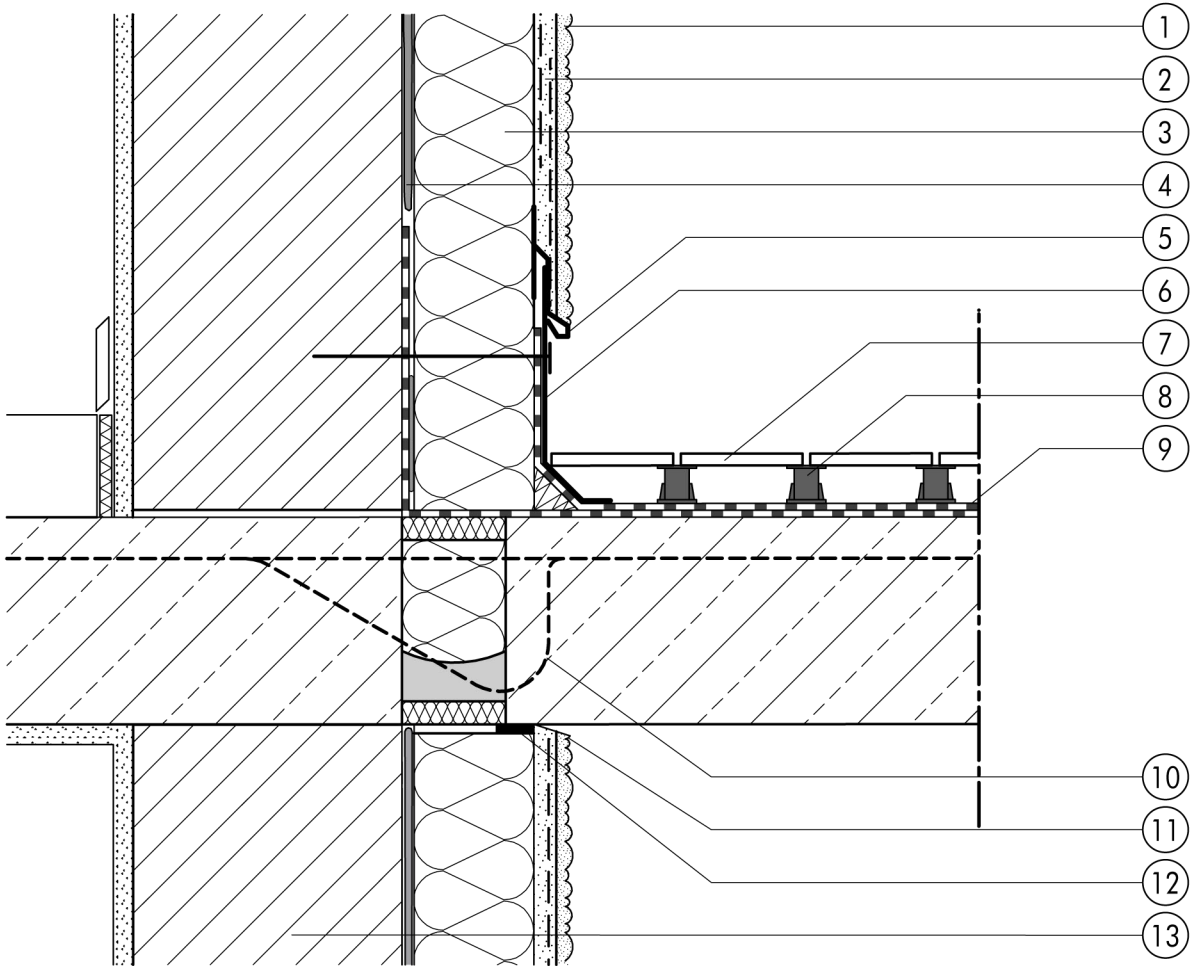


1.6 Balcony and patio junctions

1.6.03 Cantilevered balcony slab - with thermal break



1.6

- 1 Finish render, where necessary with paint coating or impregnation (e.g. NOBLO, SP 260, conni S)
- 2 Reinforcing layer (SM700, Lustro, scrim)
- 3 Insulation (plinth insulation board Sd 035)
- 4 Bonding mortar (SM700, Lustro)
- 5 Stop bead for flashings
- 6 Base flashing
- 7 Tiling

- 8 Pedestals
- 9 Waterproofing
- 10 Schöck Isokorb® loadbearing thermal insulation component
- 11 Trowel cut
- 12 Joint sealing tape
- 13 Masonry