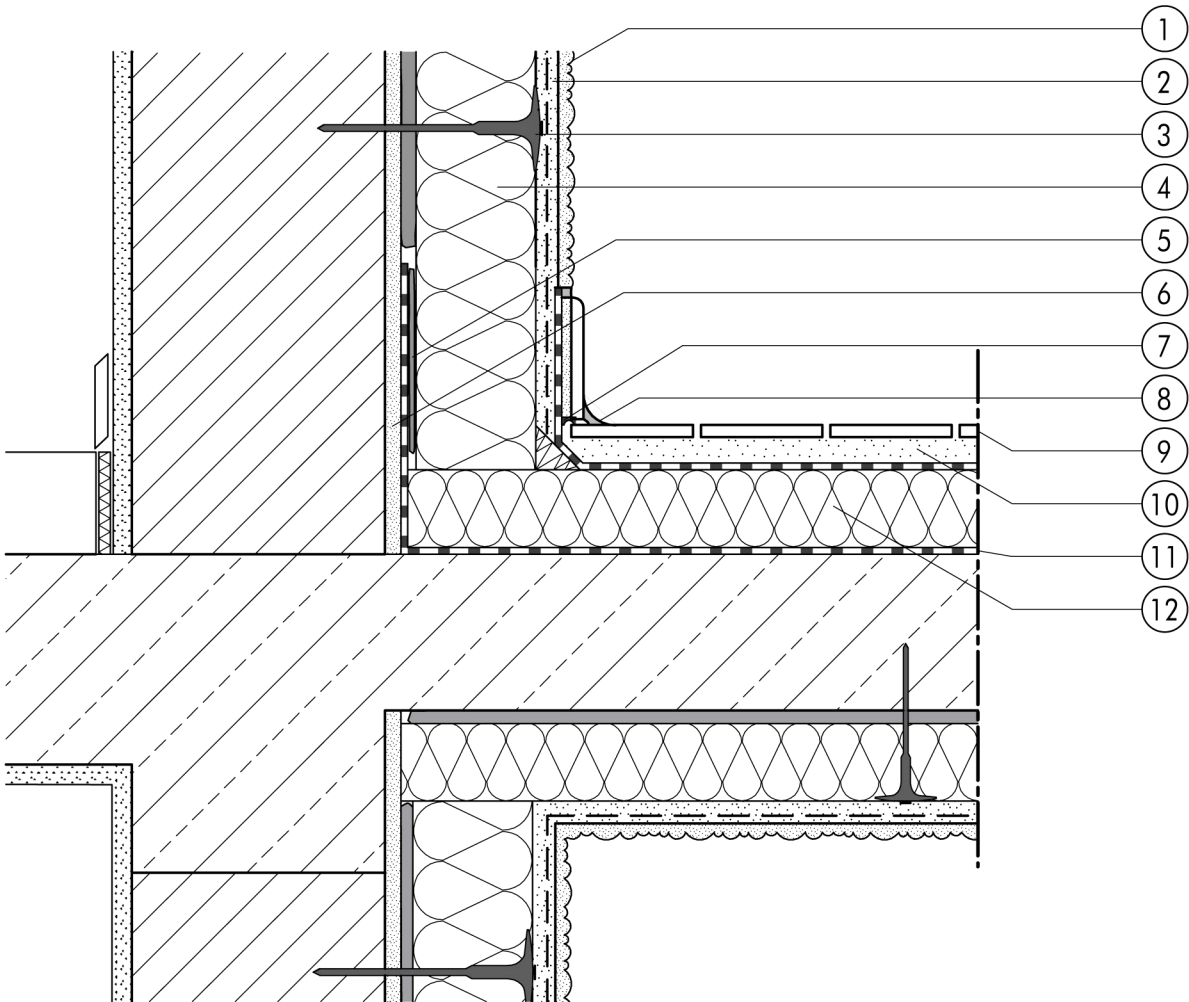


1.6 Balcony and patio junctions  
**1.6.02 Cantilevered balcony slab -  
 insulated on all sides, ETICS  
 directly applied**



1.6

- |   |  |
|---|--|
| <ul style="list-style-type: none"> <li>① Finish render, where necessary with paint coating or impregnation (e.g. NOBLO, SP 260, conni S)</li> <li>② Reinforcing layer (SM700, Lustro, scrim)</li> <li>③ System fastener</li> <li>④ Insulation (STYROPOR®, MINERAL FIBRE)</li> <li>⑤ Bonding mortar (SM700, Lustro)</li> <li>⑥ Existing plasterwork</li> </ul> | <ul style="list-style-type: none"> <li>⑦ Grooved compressible tape</li> <li>⑧ Jointing (elastic)</li> <li>⑨ Tiling</li> <li>⑩ Bedding mortar for board</li> <li>⑪ Waterproofing</li> <li>⑫ XPS insulation board</li> </ul> |
|---|--|