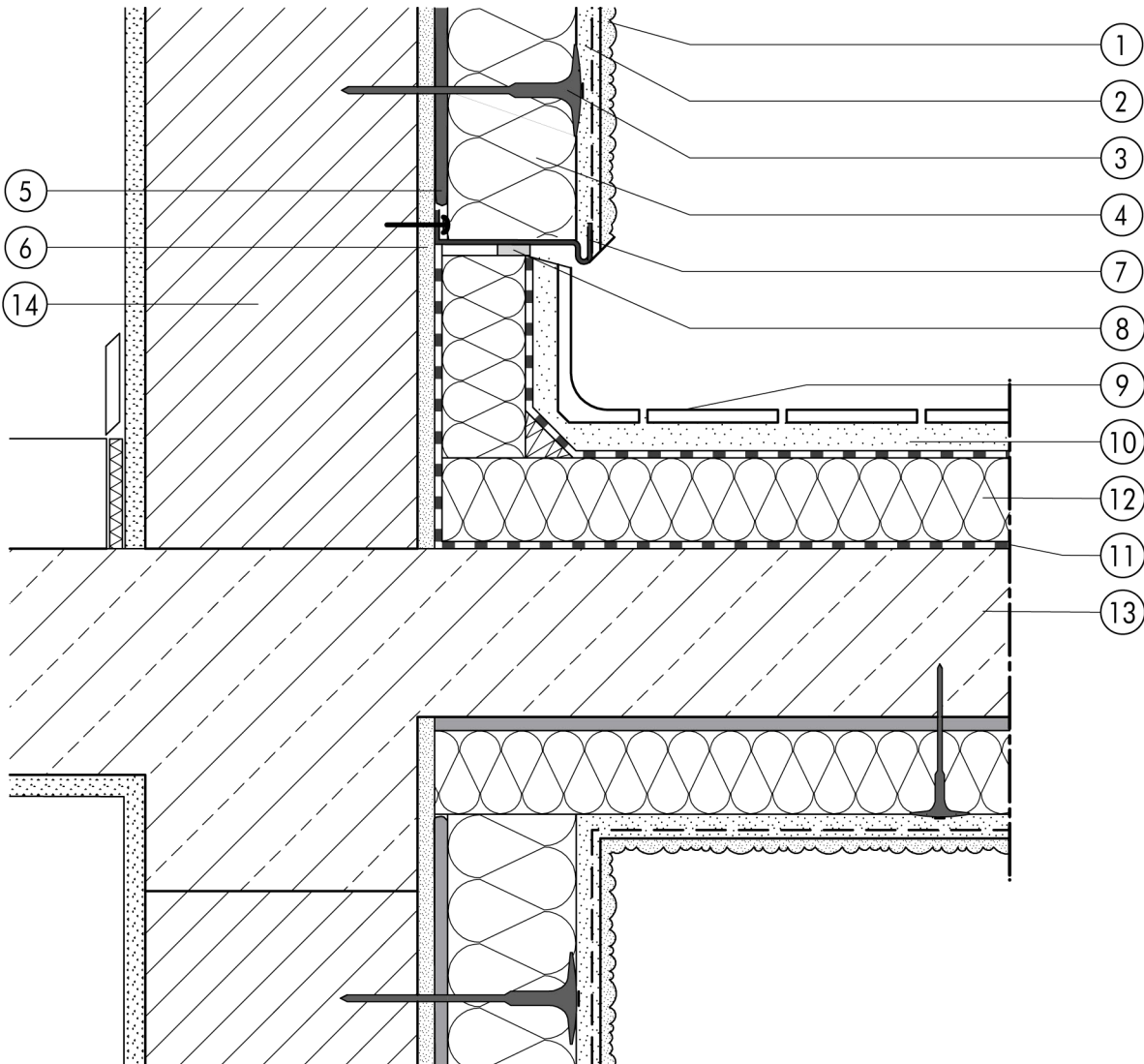


1.6 Balcony and patio junctions

**1.6.01 Cantilevered balcony slab -
insulated on all sides, ETICS -
with starter track**


- | | | | |
|---|---|---|---------------------------|
| ① | Finish render, where necessary with paint coating or impregnation (e.g. NOBLO, SP 260, conni S) | ⑧ | Joint sealing tape |
| ② | Reinforcing layer (SM700, Lustro, scrim) | ⑨ | Tiling |
| ③ | System fastener | ⑩ | Bedding mortar for board |
| ④ | Insulation (STYROPOR®, MINERAL FIBRE) | ⑪ | Waterproofing |
| ⑤ | Bonding mortar (SM700, Lustro) | ⑫ | XPS insulation board |
| ⑥ | Existing plasterwork | ⑬ | Cantilevered balcony slab |
| ⑦ | Stop bead | ⑭ | Masonry |