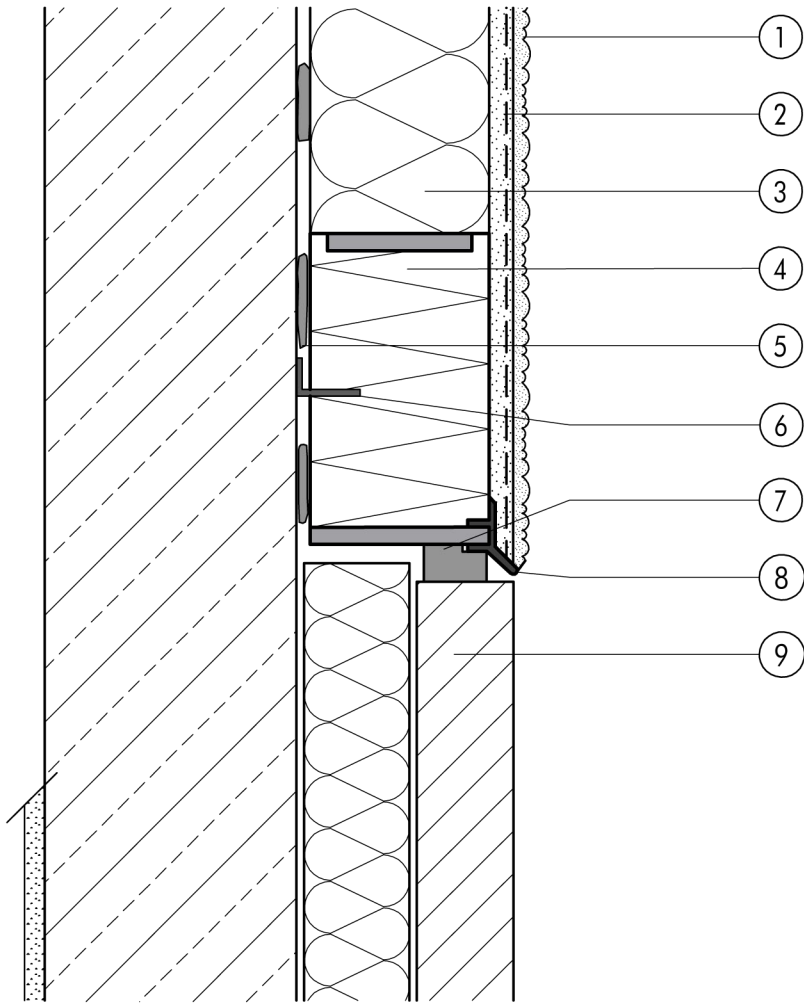


1.5 Expansion and perimeter joints

**1.5.05 Junction with facing masonry using Quix**



1.5

- ① Finish render, where necessary with paint coating or impregnation (e.g. NOBLO, SP 260, conni S)
- ② Reinforcing layer (SM700, Lustro, scrim)
- ③ Insulation (STYROPOR®, MINERAL FIBRE)
- ④ Square-Edge Quix
- ⑤ Bonding mortar (SM700, Lustro)
- ⑥ Angle bracket, adhesive-fixed
- ⑦ Joint sealing tape
- ⑧ Clip-on section
- ⑨ Facing masonry