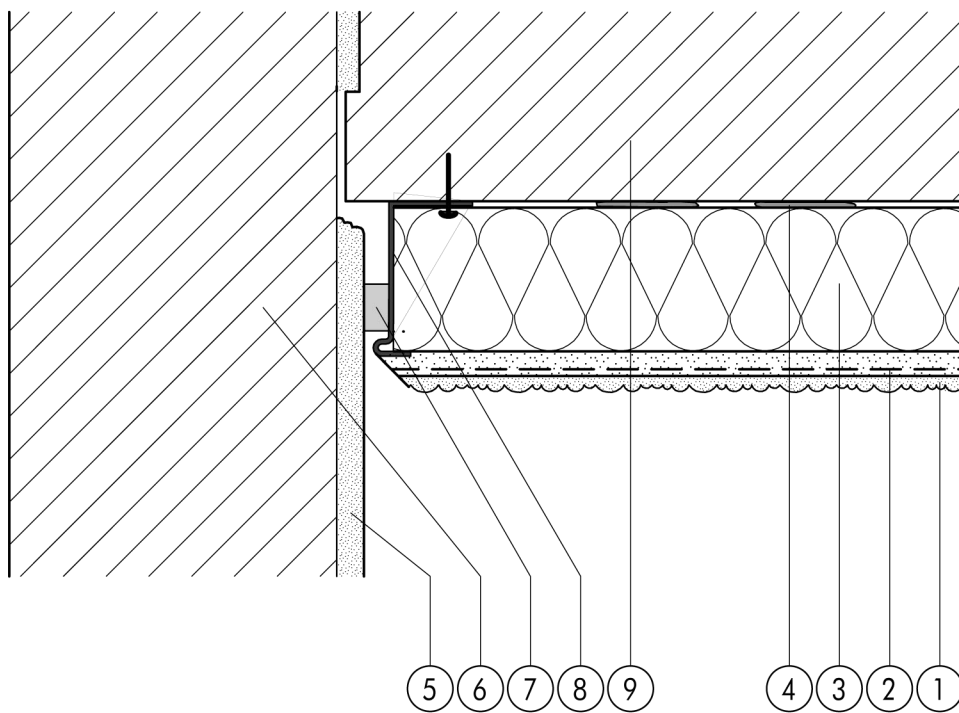


1.5 Expansion and perimeter joints

1.5.04 Junction with existing works

1.5



- | | | | |
|---|---|---|--------------------|
| ① | Finish render, where necessary with paint coating or impregnation (e.g. NOBLO, SP 260, conni S) | ⑥ | Existing works |
| ② | Reinforcing layer (SM700, Lustro, scrim) | ⑦ | Joint sealing tape |
| ③ | Insulation (STYROPOR®, MINERAL FIBRE) | ⑧ | Stop bead anchored |
| ④ | Bonding mortar (SM700, Lustro) | ⑨ | Masonry |
| ⑤ | Existing plasterwork | | |