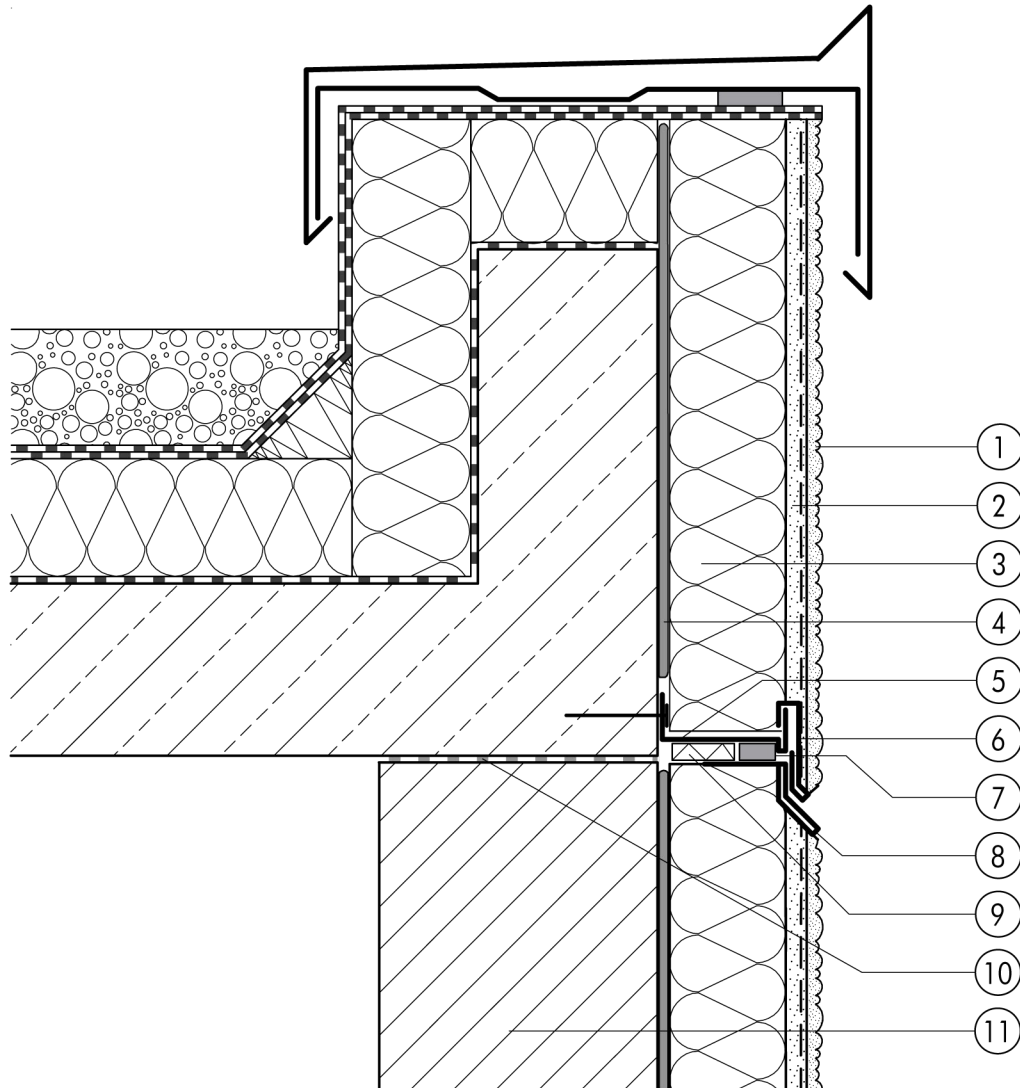


1.5 Expansion and perimeter joints

**1.5.03 Sliding joint (horizontal expansion joint)**



1.5

- ① Finish render, where necessary with paint coating or impregnation (e.g. NOBLO, SP 260, conni S)
- ② Reinforcing layer (SM700, Lustro, scrim)
- ③ Insulation (STYROPOR®, MINERAL FIBRE)
- ④ Bonding mortar (SM700, Lustro)
- ⑤ Stop bead anchored
- ⑥ Clip-on sliding joint section for starter track
- ⑦ Joint sealing tape
- ⑧ Sliding joint section (lower part)
- ⑨ Insulation strip
- ⑩ Sliding joint
- ⑪ Masonry