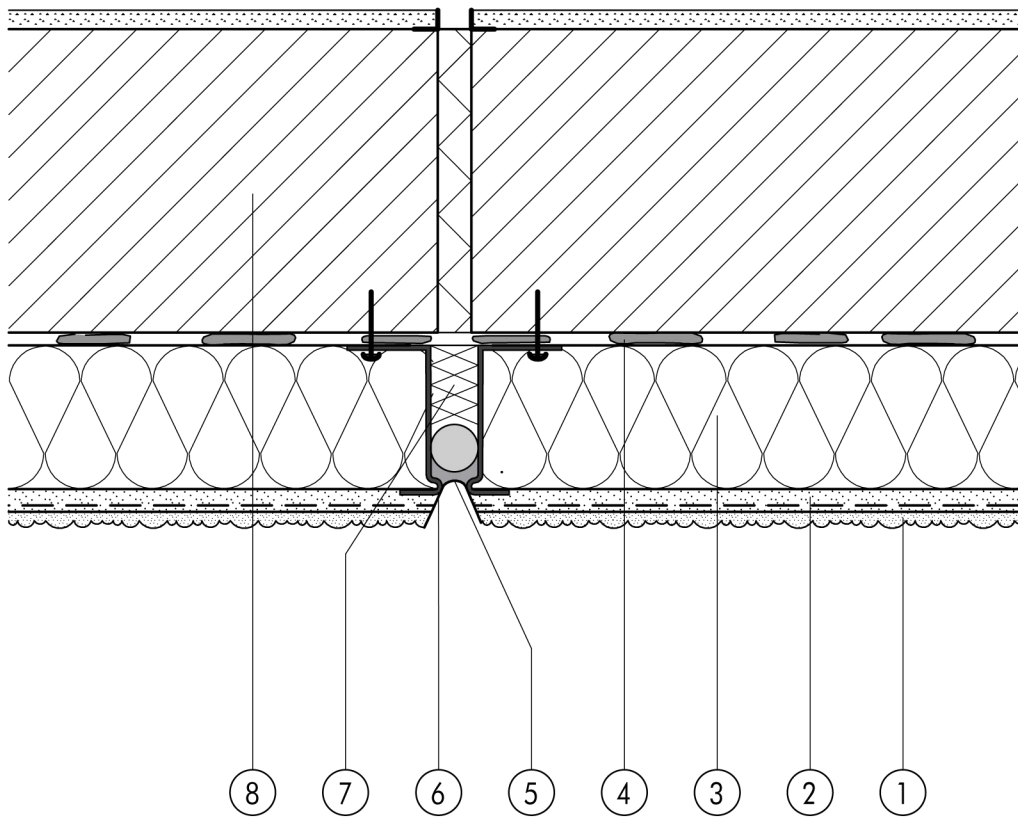


1.5 Expansion and perimeter joints
1.5.02 Expansion joint (surface)
with two stop beads



1.5

- 1 Finish render, where necessary with paint coating or impregnation (e.g. NOBLO, SP 260, conni S)
- 2 Reinforcing layer (SM700, Lustro, scrim)
- 3 Insulation (STYROPOR®, MINERAL FIBRE)
- 4 Bonding mortar (SM700, Lustro)
- 5 Back-up strip with joint sealant to DIN 18540
- 6 Stop bead anchored
- 7 Mineral-fibre joint backing
- 8 Masonry