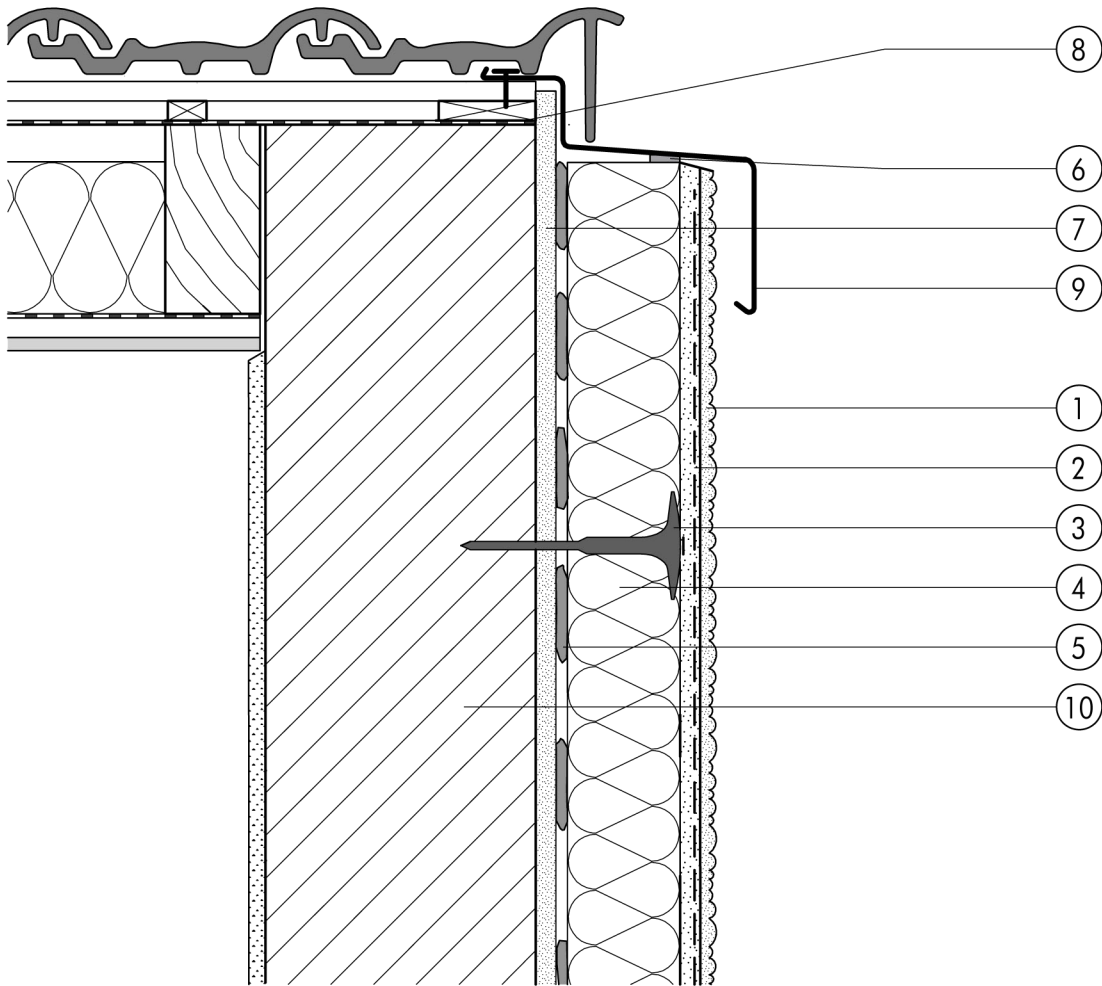


1.4 Roof junctions

1.4.11 Widening of roof edge with edge trim



1.4

- ① Finish render, where necessary with paint coating or impregnation (e.g. NOBLO, SP 260, conni S)
- ② Reinforcing layer (SM700, Lustro, scrim)
- ③ System fastener
- ④ Insulation (STYROPOR®, MINERAL FIBRE)
- ⑤ Bonding mortar (SM700, Lustro)
- ⑥ Joint sealing tape
- ⑦ Existing plasterwork
- ⑧ Sarking underlay
- ⑨ Folded sheetmetal to German Roofing Guidelines (Dachdecker-Richtlinie)
- ⑩ Masonry