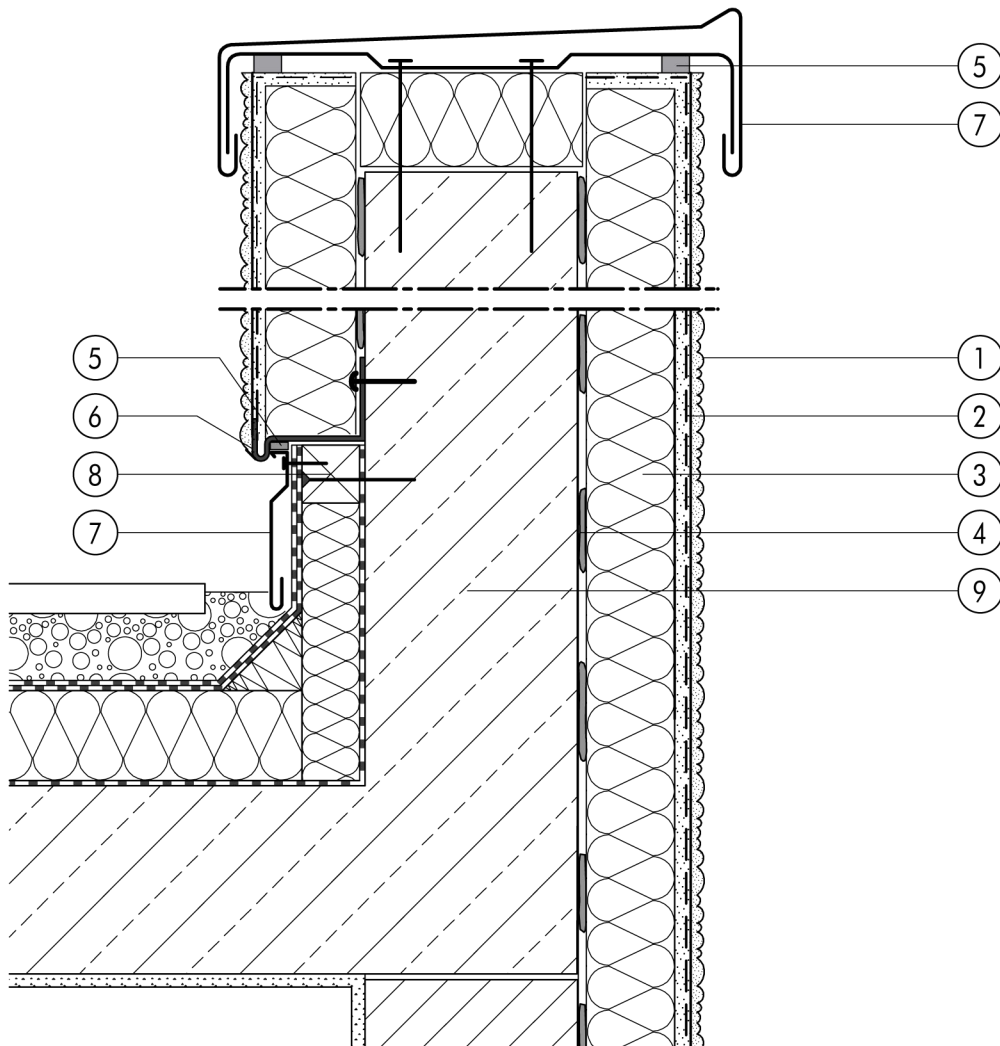


1.4 Roof junctions

1.4.10 Penthouse insulated on all sides


1.4

- | | | | |
|---|---|---|---|
| ① | Finish render, where necessary with paint coating or impregnation (e.g. NOBLO, SP 260, conni S) | ⑥ | Stop bead |
| ② | Reinforcing layer (SM700, Lustro, scrim) | ⑦ | Metal roof edge trim to German Flat Roof Guidelines |
| ③ | Insulation (STYROPOR®, MINERAL FIBRE) | ⑧ | Squared timber |
| ④ | Bonding mortar (SM700, Lustro) | ⑨ | Reinforced concrete |
| ⑤ | Joint sealing tape | | |