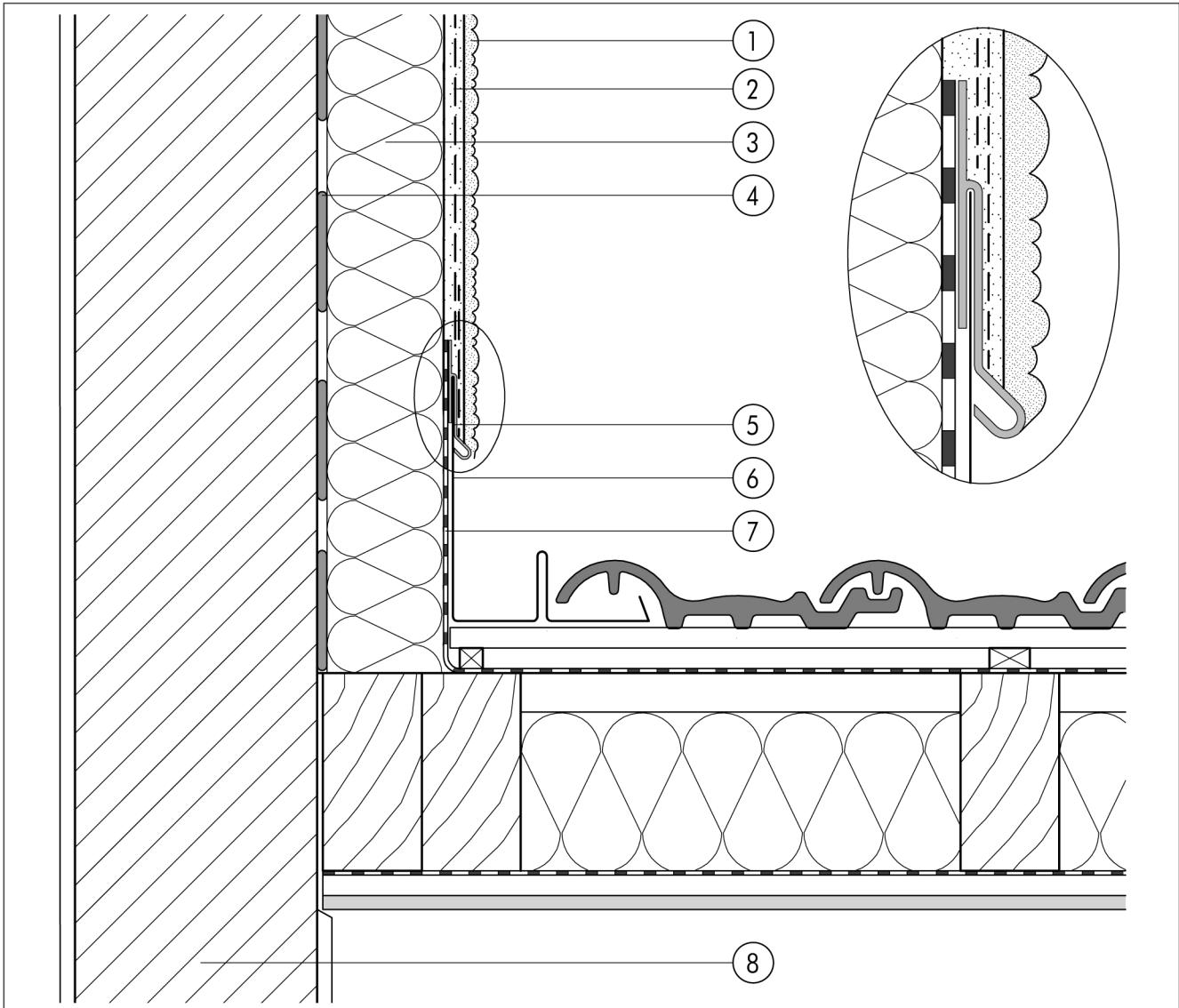


1.4 Roof junctions

**1.4.05a Pitched roof / upper wall
junction with stop bead for
flashings**


1.4

- | | | | |
|---|---|---|-------------------------|
| ① | Finish render, where necessary with paint coating or impregnation (e.g. NOBLO, SP 260, conni S) | ⑤ | Stop bead for flashings |
| ② | Reinforcing layer (SM700, Lustro, scrim) | ⑥ | Valley flashing |
| ③ | Insulation (STYROPOR®, MINERAL FIBRE) | ⑦ | Sarking underlay |
| ④ | Bonding mortar (SM700, Lustro) | ⑧ | Masonry |