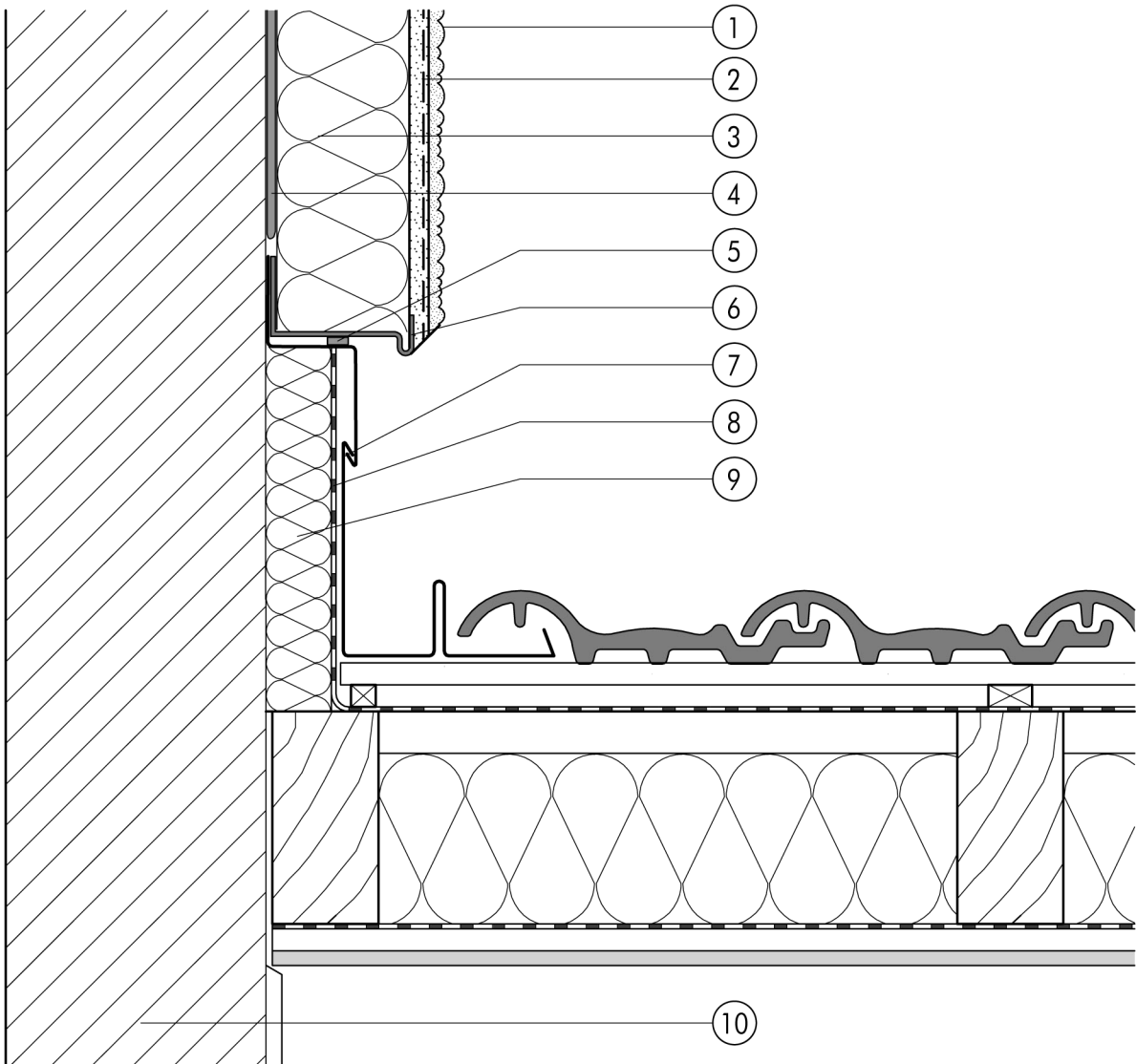


1.4 Roof junctions

**1.4.05 Pitched roof / upper wall junction**

1.4



- |   |                                                                                                 |   |                  |
|---|-------------------------------------------------------------------------------------------------|---|------------------|
| ① | Finish render, where necessary with paint coating or impregnation (e.g. NOBLO, SP 260, conni S) | ⑥ | Stop bead        |
| ② | Reinforcing layer (SM700, Lustro, scrim)                                                        | ⑦ | Valley flashing  |
| ③ | Insulation (STYROPOR®, MINERAL FIBRE)                                                           | ⑧ | Sarking underlay |
| ④ | Bonding mortar (SM700, Lustro)                                                                  | ⑨ | Insulation       |
| ⑤ | Joint sealing tape                                                                              | ⑩ | Masonry          |