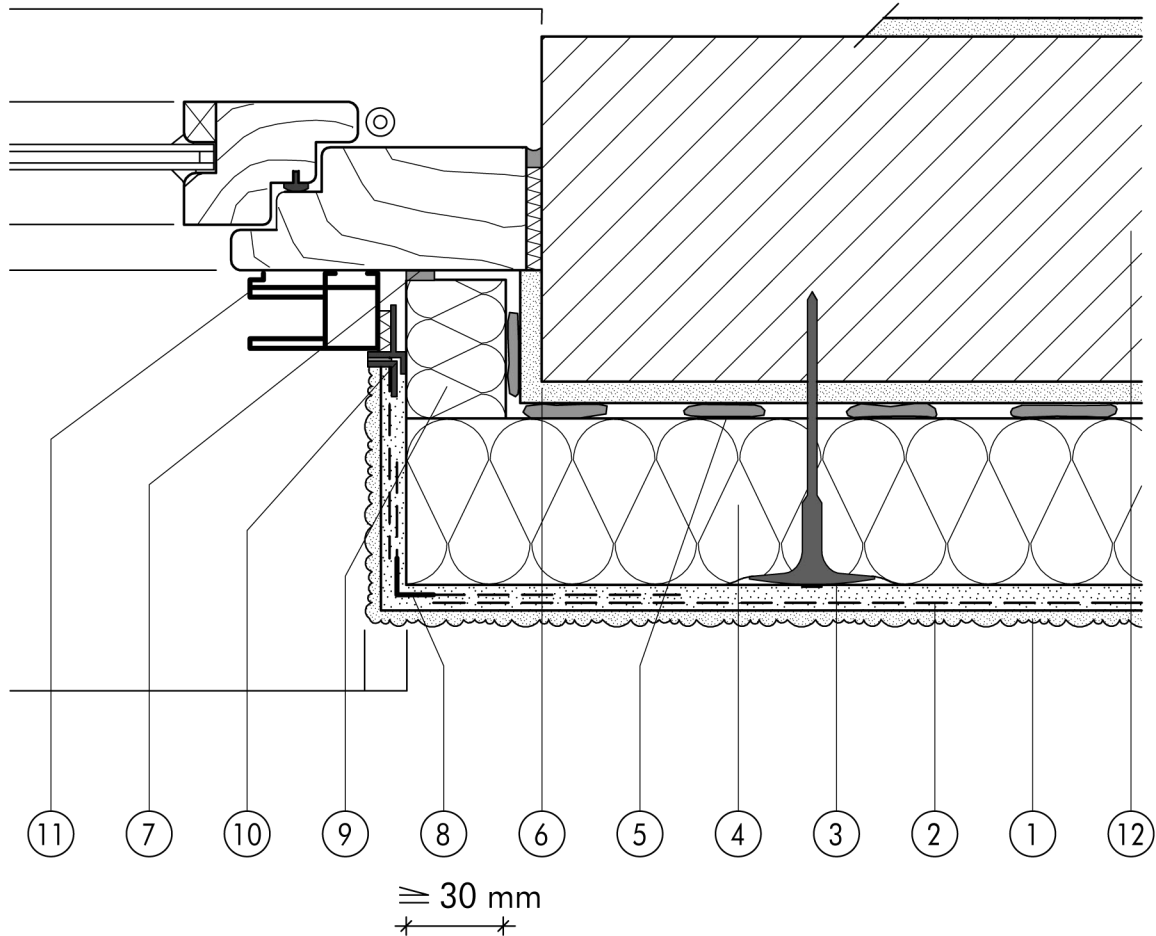


1.3 Window junctions

1.3.11 Junction with guide rail for front-fixed roller shutter box



1.3

- | | | | |
|---|---|---|-----------------------------|
| ① | Finish render, where necessary with paint coating or impregnation (e.g. NOBLO, SP 260, conni S) | ⑦ | Joint sealing tape |
| ② | Reinforcing layer (SM700, Lustro, scrim) | ⑧ | Angle bead with scrim |
| ③ | System fastener | ⑨ | Jamb insulation board |
| ④ | Insulation (STYROPOR®, MINERAL FIBRE) | ⑩ | Stop bead with scrim (ROMA) |
| ⑤ | Bonding mortar (SM700, Lustro) | ⑪ | Roller shutter guide rail |
| ⑥ | Existing plasterwork | ⑫ | Masonry |