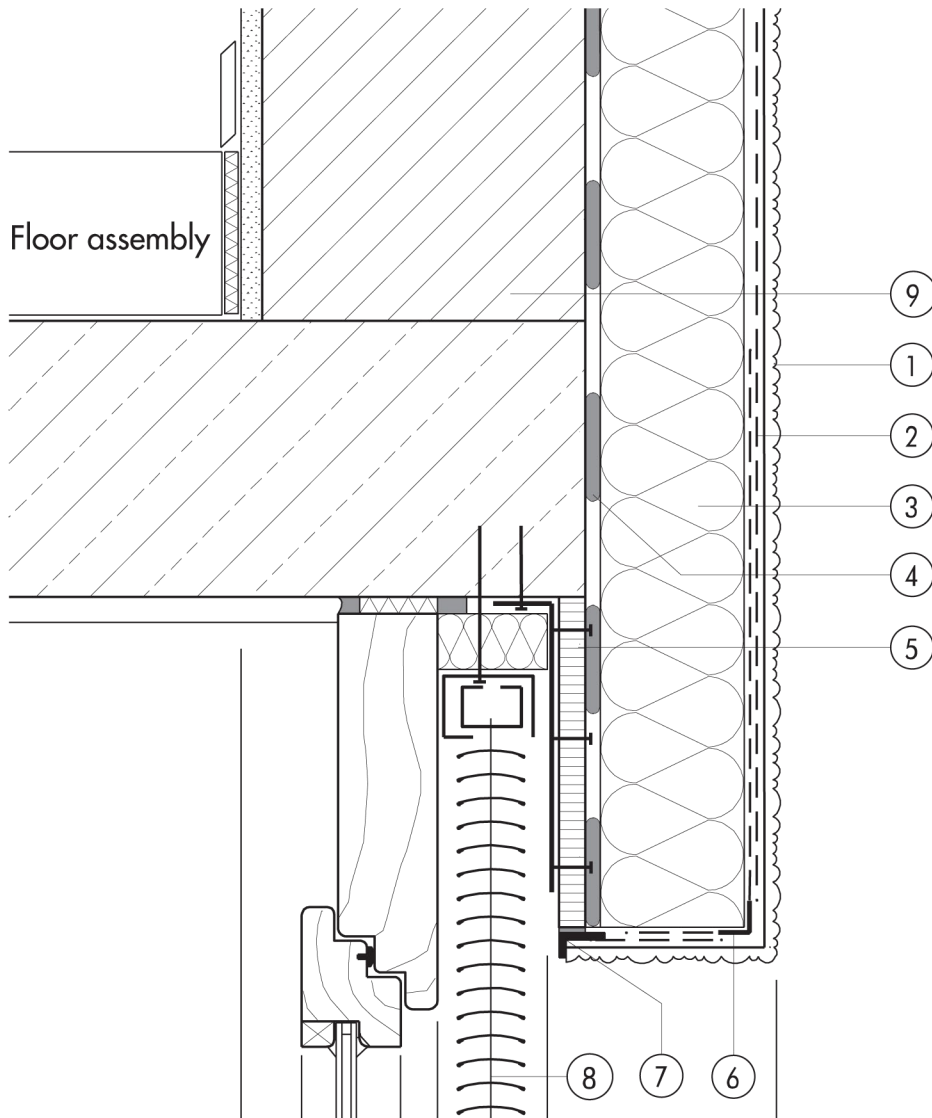


## 1.3 Window junctions

## 1.3.09 Pelmet over blind box



1.3

- |   |   |   |                       |
|---|---|---|-----------------------|
| ① | Finish render, where necessary with paint coating or impregnation (e.g. NOBLO, SP 260, conni S) | ⑥ | Angle bead with scrim |
| ② | Reinforcing layer (SM700, Lustro, scrim)  | ⑦ | Stop bead with scrim  |
| ③ | Insulation (STYROPOR®, MINERAL FIBRE)   | ⑧ | Venetian blind        |
| ④ | Bonding mortar (SM700, Lustro)  | ⑨ | Masonry               |
| ⑤ | Fibre-cement board as rigid, weather-resistant pelmet (screwed to angle brackets)               |   |                       |