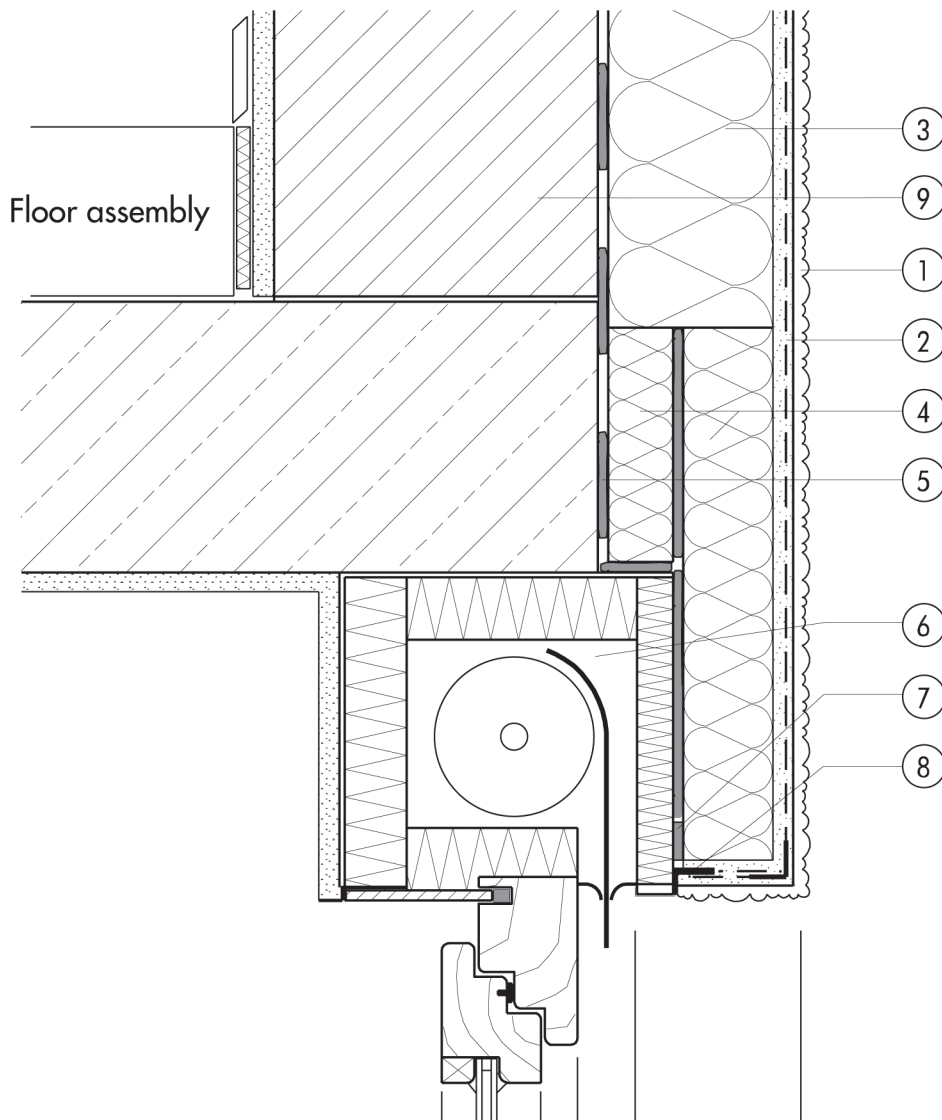


## 1.3 Window junctions

**1.3.07 Built-in roller shutter box – projecting**


1.3

- |   |   |   |                      |
|---|---|---|----------------------|
| ① | Finish render, where necessary with paint coating or impregnation (e.g. NOBLO, SP 260, conni S) | ⑥ | Roller shutter box   |
| ② | Reinforcing layer (SM700, Lustro, scrim)  | ⑦ | Joint sealing tape   |
| ③ | Insulation (STYROPOR®, MINERAL FIBRE)   | ⑧ | Stop bead with scrim |
| ④ | Mineral-fibre plank for STYROPOR® > 100 mm (e.g. volamit)                                       | ⑨ | Masonry              |
| ⑤ | Bonding mortar (SM700, Lustro)  |   |                      |