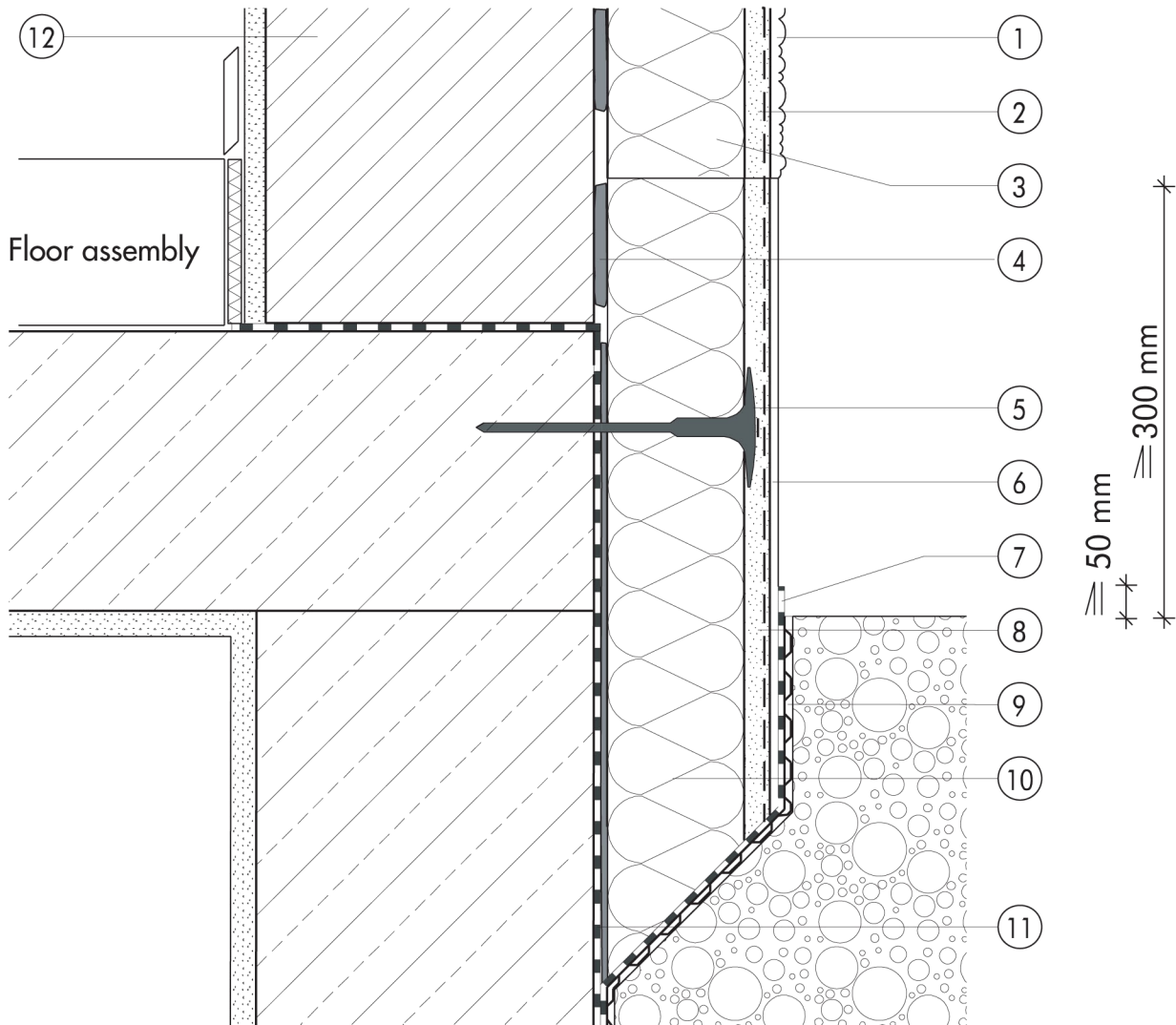


## 1.2 Plinth detailing

**1.2.08 Plinth insulation carried slightly below ground**


## 1.2

- |   |   |   |  |
|---|---|---|--|
| ① | Finish render, where necessary with paint coating or impregnation (e.g. NOBLO, SP 260, conni S) | ⑦ | Mineral waterproof membrane (SOCKEL-DICHT)         |
| ② | Reinforcing layer (SM700, Lustro, scrim)  | ⑧ | Reinforcing layer (SOCKEL-SM, scrim)               |
| ③ | Insulation (STYROPOR®, MINERAL FIBRE)   | ⑨ | Nonwoven-faced studded sheet                       |
| ④ | Bonding mortar (SM700, Lustro)  | ⑩ | Plinth insulation (Sd 035 plinth insulation board) |
| ⑤ | System fastener   | ⑪ | Basement waterproofing                             |
| ⑥ | Felt-float render finish with two coats of paint (SOCKEL-SM, DER HAFTPUTZ)                      | ⑫ | Masonry  |