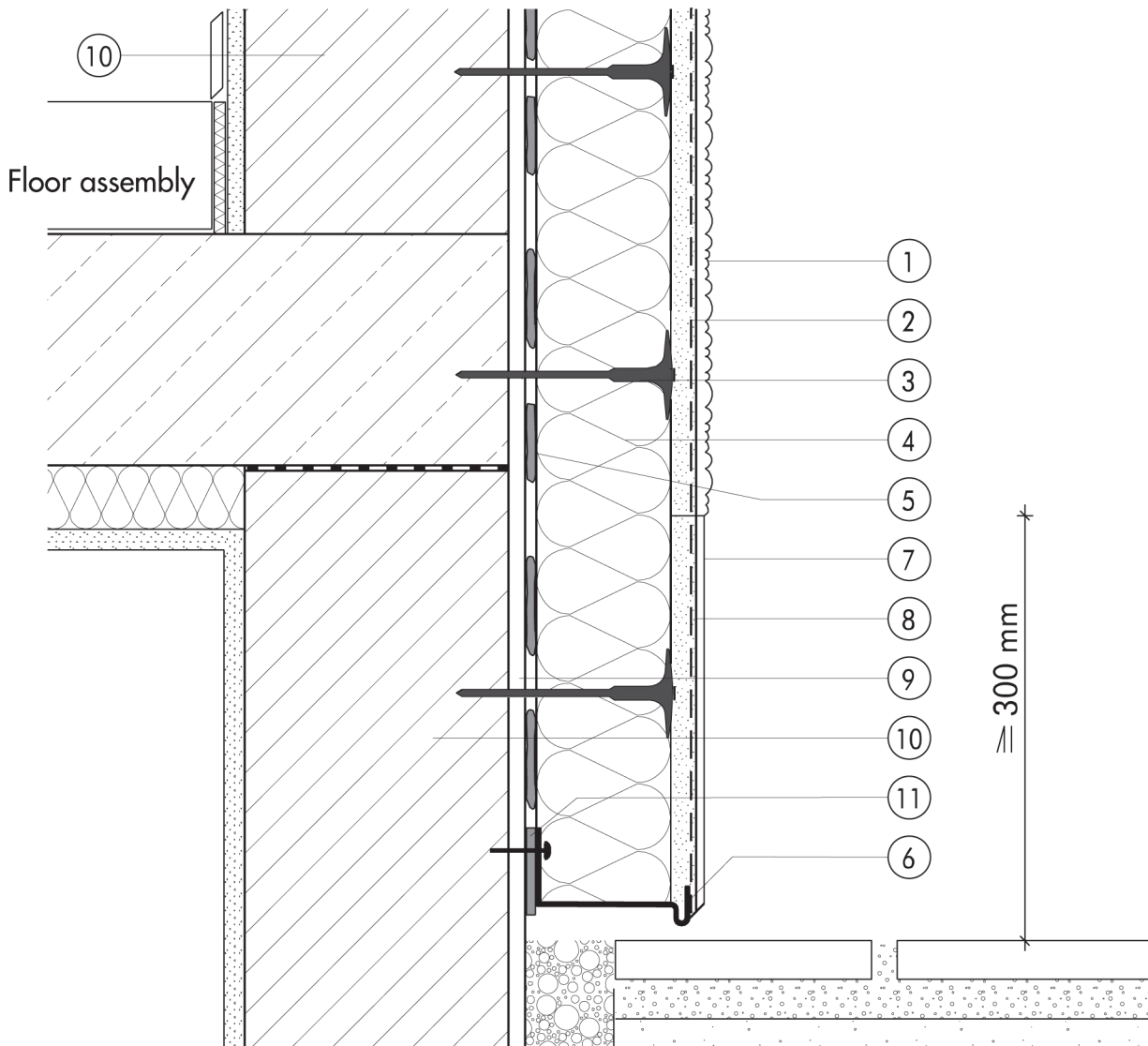


## 1.2 Plinth detailing

**1.2.06 Plinth insulation not carried below ground**


1.2

- |   |   |   |  |
|---|---|---|--|
| ① | Finish render, where necessary with paint coating or impregnation (e.g. NOBLO, SP 260, conni S) | ⑦ | Felt-float render finish with two coats of paint (SOCKEL-SM, DER HAFTPUTZ) |
| ② | Reinforcing layer (SM700, Lustro, scrim)  | ⑧ | Reinforcing layer (SOCKEL-SM, scrim)                                       |
| ③ | System fastener   | ⑨ | Existing plasterwork   |
| ④ | Insulation (STYROPOR®, MINERAL FIBRE)   | ⑩ | Masonry  |
| ⑤ | Bonding mortar (SM700, Lustro)  | ⑪ | Where necessary, maintain distance with spacers                            |
| ⑥ | Stop bead   |   |  |