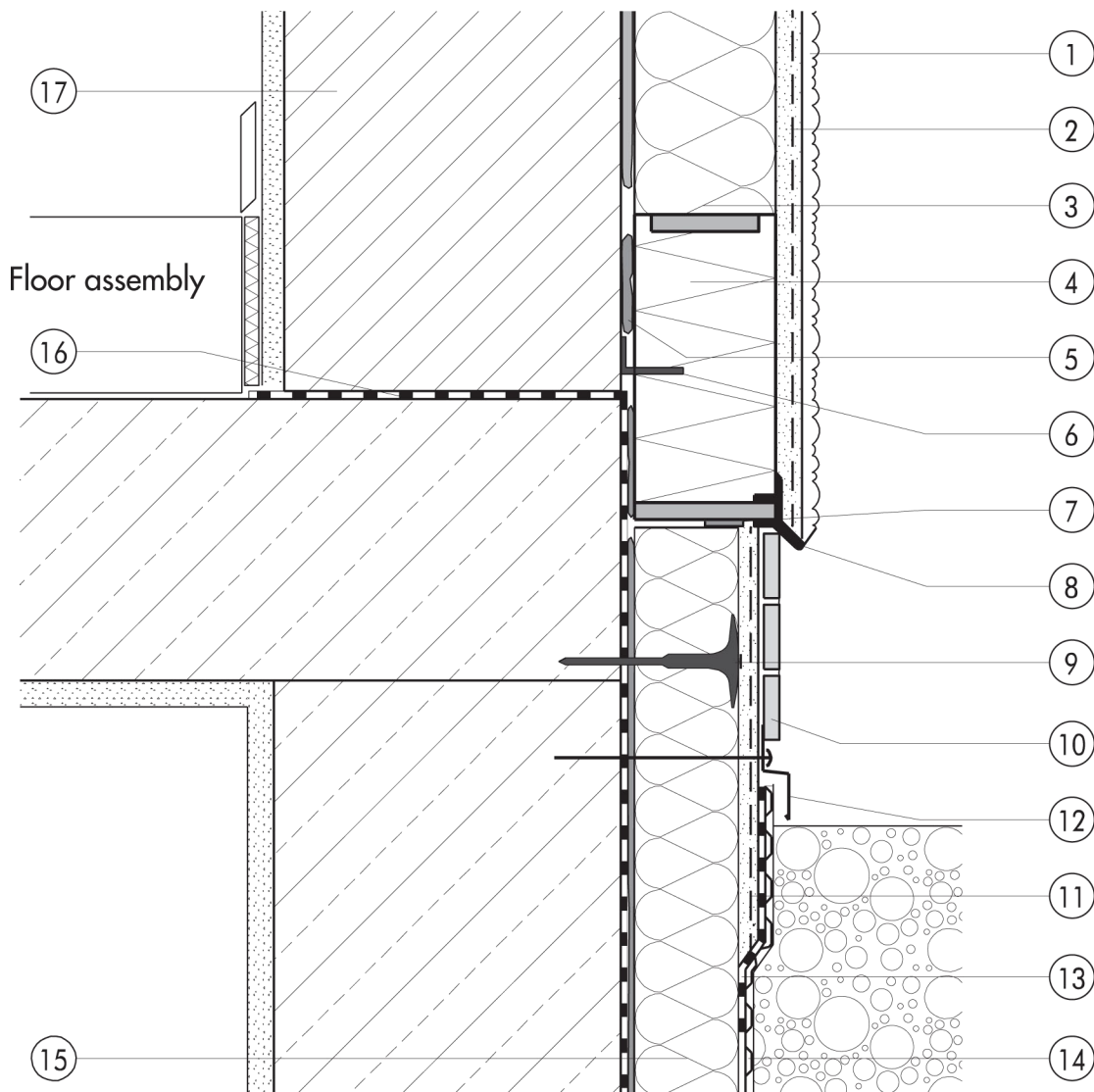


## 1.2 Plinth detailing

**1.2.04 Plinth insulation carried  
below ground with Quix**


## 1.2

- |   |   |   |  |
|---|---|---|--|
| ① | Finish render, where necessary with paint coating or impregnation (e.g. NOBLO, SP 260, conni S) | ⑩ | Brick slip   |
| ② | Reinforcing layer (5 - 10 mm) (SM700, Lustro, scrim)  | ⑪ | Reinforcing layer (SOCKEL-SM, scrim)               |
| ③ | Insulation (STYROPOR®, MINERAL FIBRE)   | ⑫ | Stop bead / trim anchored (stainless steel)        |
| ④ | Square-Edge Quix starter system   | ⑬ | Mineral waterproof membrane (SOCKEL-DICHT)         |
| ⑤ | Bonding mortar (SM700, Lustro)  | ⑭ | Nonwoven-faced studded sheet                       |
| ⑥ | Angle bracket, adhesive-fixed   | ⑮ | Plinth insulation (Sd 035 plinth insulation board) |
| ⑦ | Joint sealing tape  | ⑯ | Basement waterproofing                             |
| ⑧ | Clip-on section   | ⑰ | Masonry  |
| ⑨ | System fastener   |   |  |