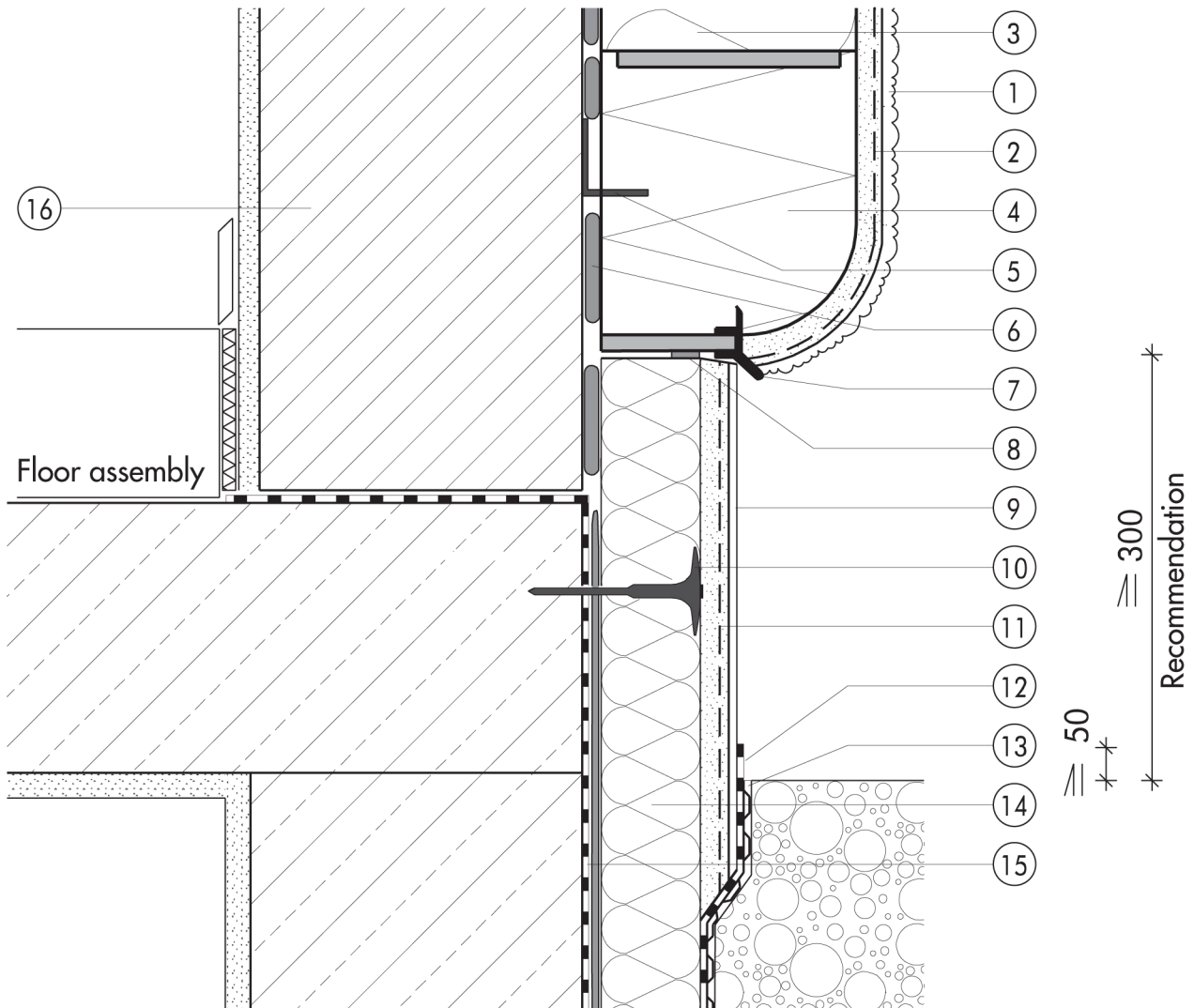


1.2 Plinth detailing

1.2.03 Radiused Quix starter blocks at plinth


1.2

- | | | | |
|---|---|---|--|
| ① | Finish render, where necessary with paint coating or impregnation (e.g. NOBLO, SP 260, conni S) | ⑨ | Felt-float render finish with two coats of paint (SOCKEL-SM, DER HAFTPUTZ) |
| ② | Reinforcing layer (SM700, Lustro, scrim) | ⑩ | System fastener |
| ③ | Insulation (STYROPOR®, MINERAL FIBRE) | ⑪ | Reinforcing layer (SOCKEL-SM, scrim) |
| ④ | Radiused Quix starter system | ⑫ | Mineral waterproof membrane (SOCKEL-DICHT) |
| ⑤ | Angle bracket, adhesive-fixed | ⑬ | Nonwoven-faced studded sheet |
| ⑥ | Bonding mortar (SM700, Lustro) | ⑭ | Plinth insulation (Sd 035 plinth insulation board) |
| ⑦ | Clip-on section | ⑮ | Basement waterproofing |
| ⑧ | Joint sealing tape | ⑯ | Masonry |