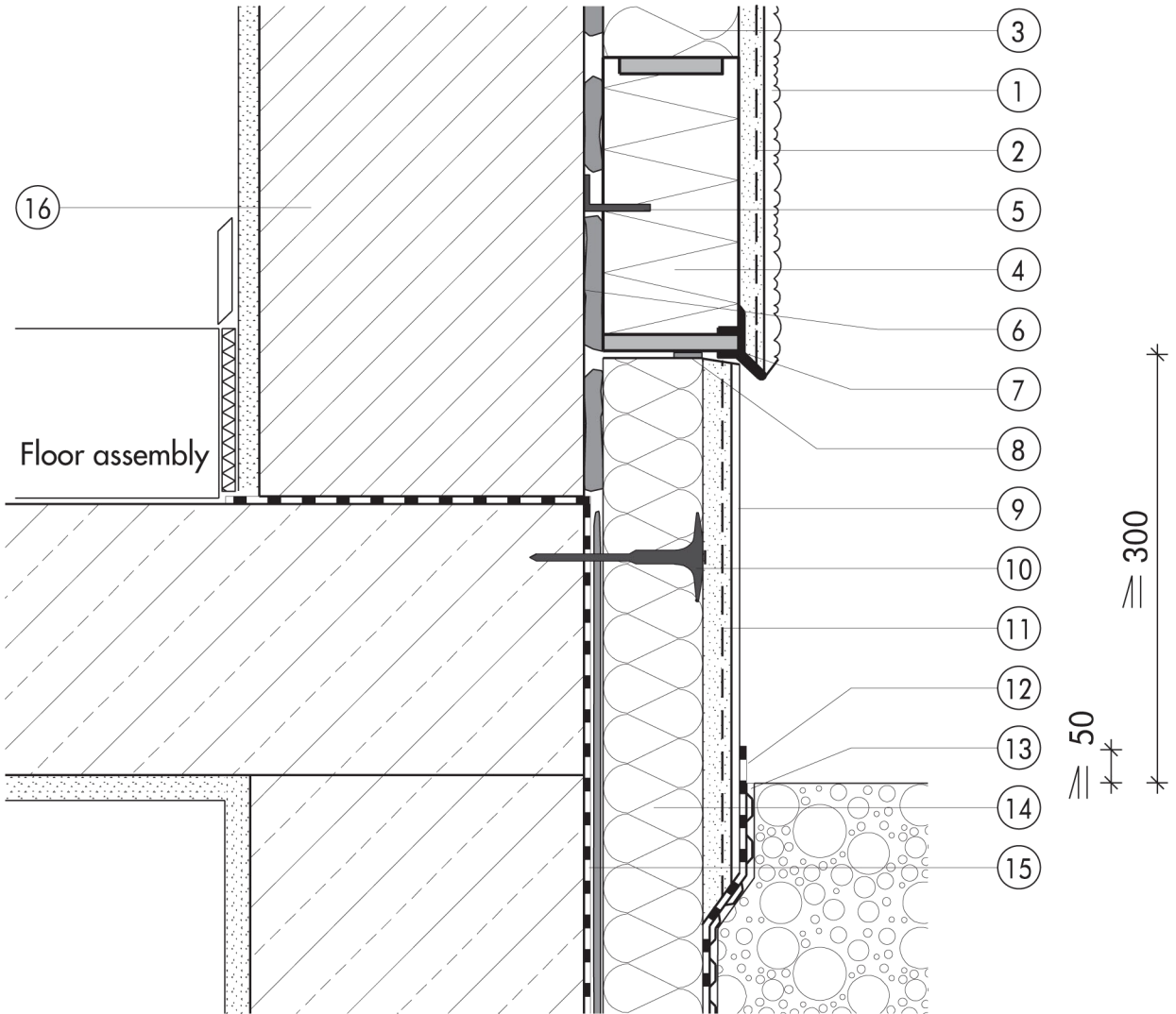


1.2 Plinth detailing
1.2.02 Square-Edge Quix starter blocks at plinth

1.2



- | | |
|---|--|
| <ul style="list-style-type: none"> ① Finish render, where necessary with paint coating or impregnation (e.g. NOBLO, SP 260, conni S) ② Reinforcing layer (SM700, Lustro, scrim) ③ Insulation (STYROPOR®, MINERAL FIBRE) ④ Square-Edge Quix starter system ⑤ Angle bracket, adhesive-fixed ⑥ Bonding mortar (SM700, Lustro) ⑦ Clip-on section ⑧ Joint sealing tape | <ul style="list-style-type: none"> ⑨ Felt-float render finish with two coats of paint (SOCKEL-SM, DER HAFTPUTZ) ⑩ System fastener ⑪ Reinforcing layer (SOCKEL-SM, scrim) ⑫ Mineral waterproof membrane (SOCKEL-DICHT) ⑬ Nonwoven-faced studded sheet ⑭ Plinth insulation (Sd 035 plinth insulation board) ⑮ Basement waterproofing ⑯ Masonry |
|---|--|