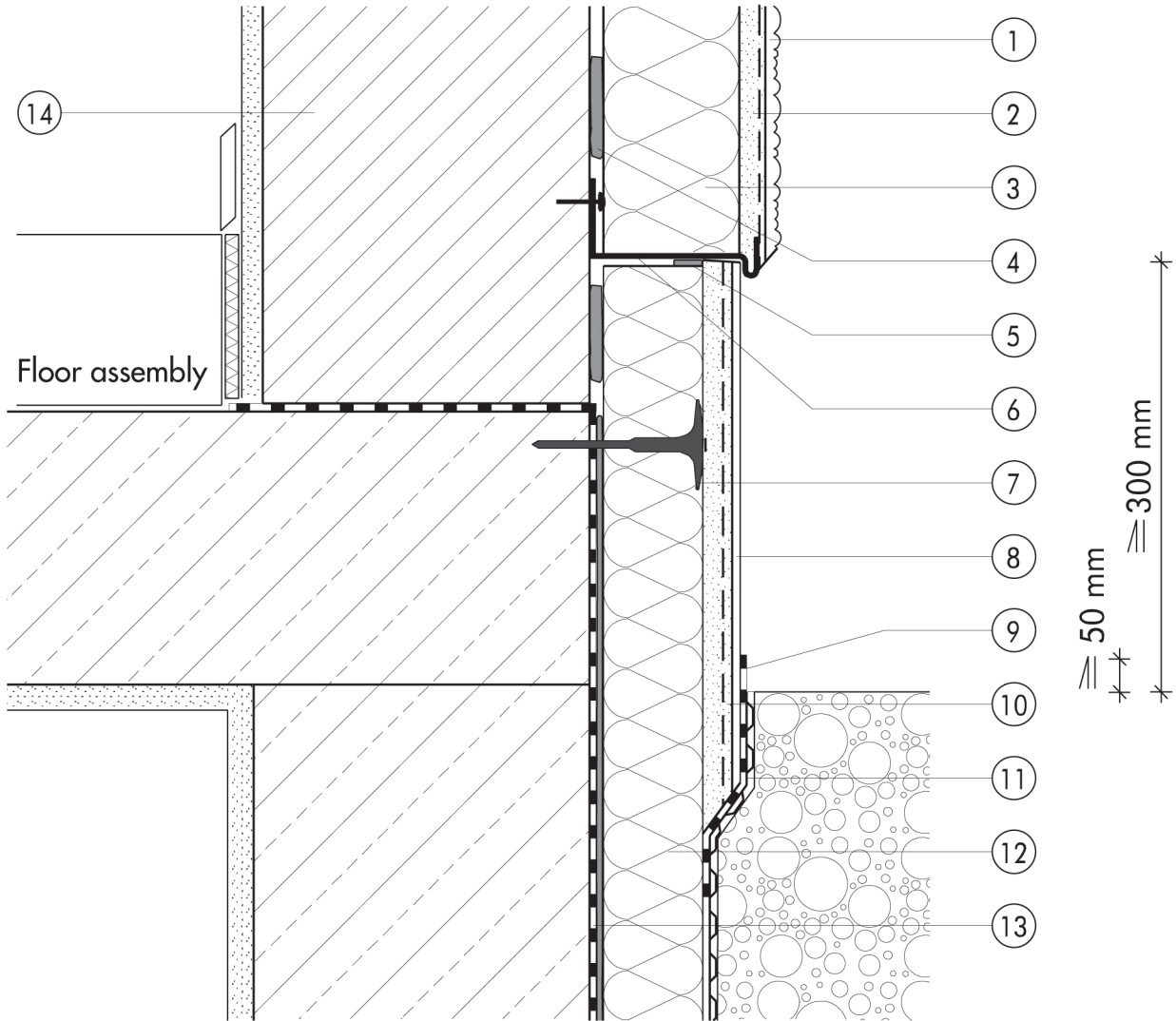


1.2 Plinth detailing

1.2.01 Starter track at plinth

1.2



- ① Finish render, where necessary with paint coating or impregnation (e.g. NOBLO, SP 260, conni S)
- ② Reinforcing layer (SM700, Lustro, scrim)
- ③ Insulation (STYROPOR®, MINERAL FIBRE)
- ④ Bonding mortar (SM700, Lustro)
- ⑤ Joint sealing tape
- ⑥ Stop bead
- ⑦ System fastener

- ⑧ Felt-float render finish with two coats of paint (SOCKEL-SM, DER HAFTPUTZ)
- ⑨ Mineral waterproof membrane (SOCKEL-DICHT)
- ⑩ Reinforcing layer (SOCKEL-SM, scrim)
- ⑪ Nonwoven-faced studded sheet
- ⑫ Plinth insulation (Sd 035 plinth insulation board)
- ⑬ Basement waterproofing
- ⑭ Masonry