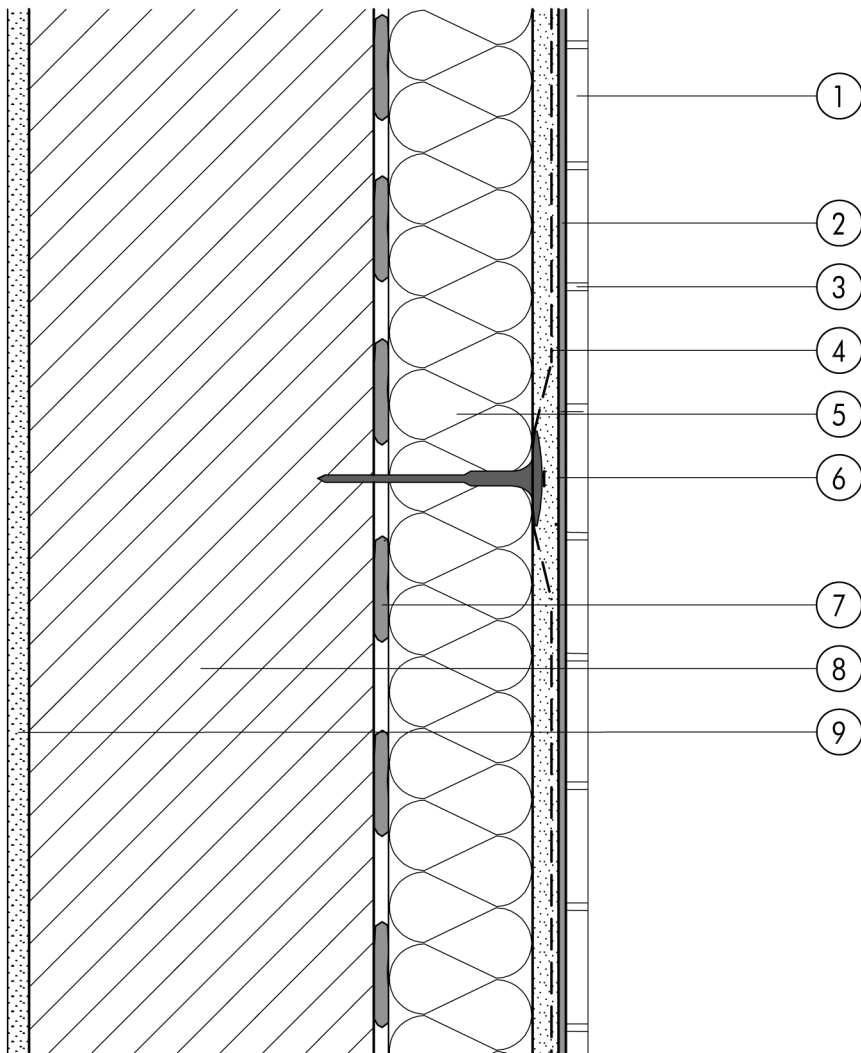


1.1 Standard assemblies

**1.1.04 Ceramic system**

1.1



- ① Ceramic cladding
- ② Bedding mortar (5er FLEX-KLEBER flexible adhesive)
- ③ Pointing mortar (5er FUGMASSE)
- ④ Reinforcing layer (SOCKEL-SM, scrim)
- ⑤ Insulation (STYROPOR®)

- ⑥ System fastener
- ⑦ Bonding mortar (SM700, Lustro)
- ⑧ Masonry
- ⑨ Internal plaster