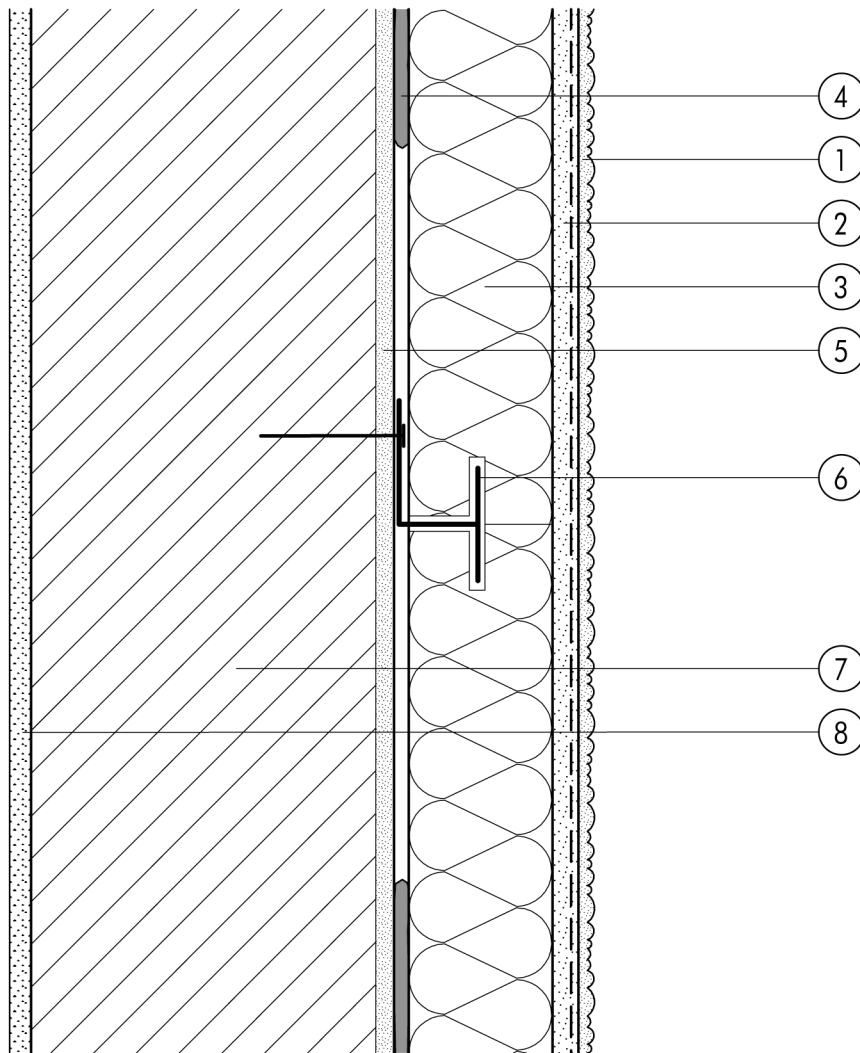


1.1 Standard assemblies

1.1.03 Track system

1.1



- ① Finish render, where necessary with paint coating or impregnation (e.g. NOBLO, SP 260, conni S)
- ② Reinforcing layer (SM700, Lustro, scrim)
- ③ Insulation (STYROPOR®, MINERAL FIBRE)
- ④ Bonding mortar (SM700, Lustro)
- ⑤ Existing plasterwork
- ⑥ Support strip
- ⑦ Masonry
- ⑧ Internal plaster