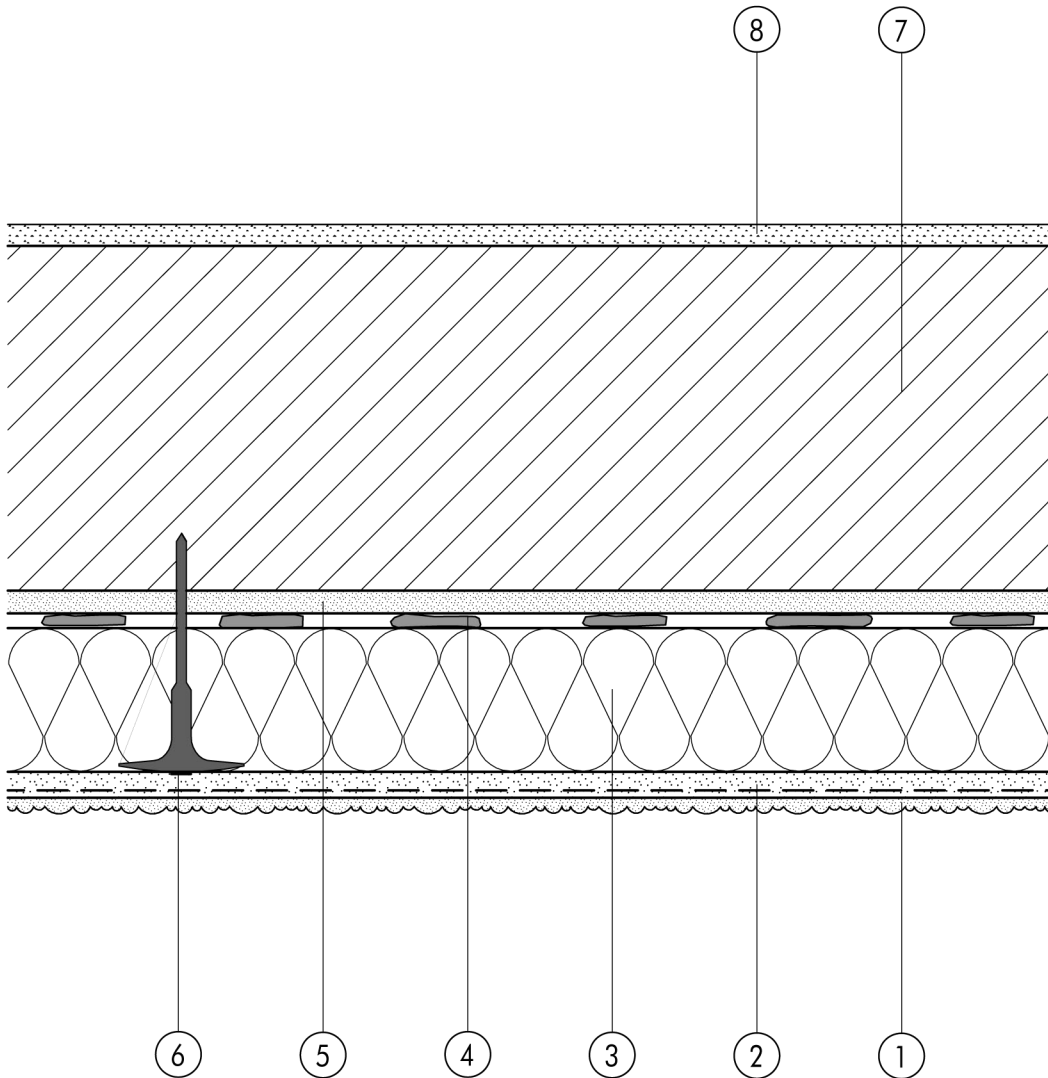


1.1 Standard assemblies

1.1.02 Existing building

1.1



- | | | | |
|---|---|---|----------------------|
| ① | Finish render, where necessary with paint coating or impregnation (e.g. NOBLO, SP 260, conni S) | ⑤ | Existing plasterwork |
| ② | Reinforcing layer (SM700, Lustro, scrim) | ⑥ | System fastener |
| ③ | Insulation (STYROPOR®, MINERAL FIBRE) | ⑦ | Masonry |
| ④ | Bonding mortar (SM700, Lustro) | ⑧ | Internal plaster |